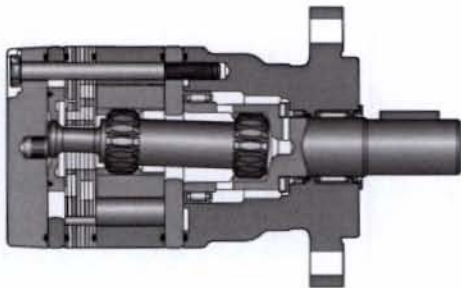


- **Low-speed Gerotor motor**
- **Specific commutation valve**
Low internal leakage
High volumetric efficiency
- **Roller vane rotor set**
Reduced friction
Prolonged service life

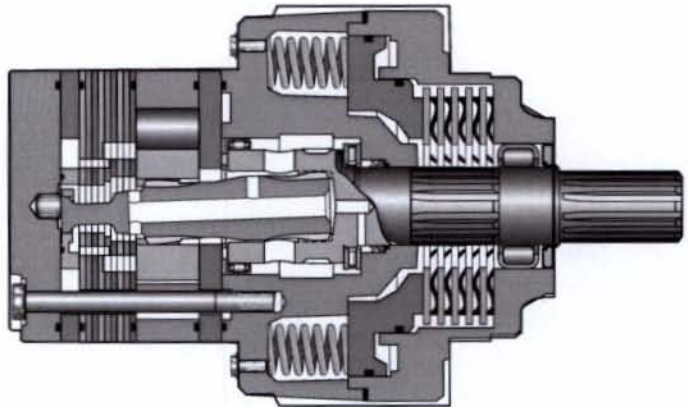
- **Patented high-pressure shaft seal**
No internal check valves required
No extra plumbing necessary
- **Wide choice of displacement range, flange and shaft options**
Numerous applications possible

1

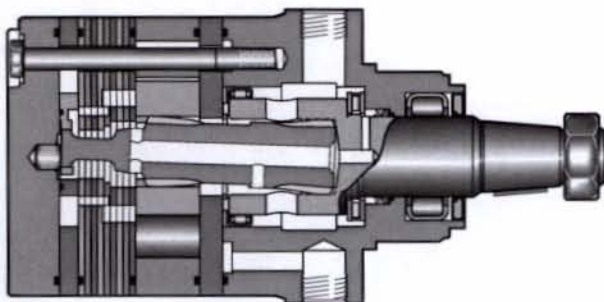
TE



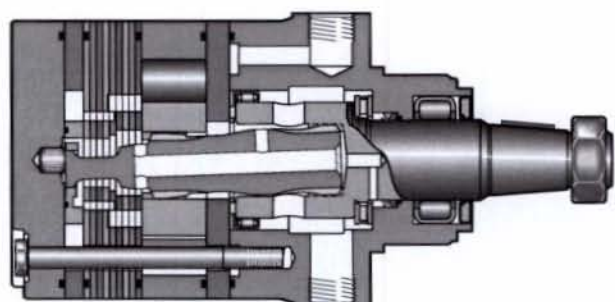
BG



TF / TG



TH



1

Motor range	Geometric displacement	Max. speed	Max. oil flow	Max. differential pressure	Max. supply pressure	Max. torque	Max. performance	
TE	cm ³ /rev	rev/min	cont / int l/min	cont / int bar	bar	cont / int Nm	max KW	Side loads
TE 50	50	725 / 935	35 / 45	140 / 175	200	90 / 115	11	TE 7.000 N
TE 65	66	705 / 940	45 / 60	140 / 175	200	125 / 160	15	
TE/ 80	82	560 / 750	45 / 60	140 / 175	200	160 / 200	15	
TE 100	98	470 / 630	45 / 60	140 / 175	200	190 / 240	15	
TE 130	130	350 / 470	45 / 60	140 / 175	200	255 / 320	15	
TE 165	163	280 / 375	45 / 60	140 / 175	200	310 / 395	15	
TE 195	196	235 / 315	45 / 60	140 / 175	200	390 / 480	15	
TE 230	228	265 / 330	60 / 75	120 / 150	200	380 / 480	15	
TE 260	261	230 / 290	60 / 75	110 / 140	200	400 / 525	15	
TE 295	293	200 / 255	60 / 75	100 / 130	200	410 / 520	13	
TE 330	326	185 / 235	60 / 75	100 / 120	200	430 / 530	13	
TE 365	370	150 / 200	60 / 75	95 / 110	200	467 / 558	11	
TE 390	392	152 / 190	60 / 75	85 / 100	200	435 / 540	10	

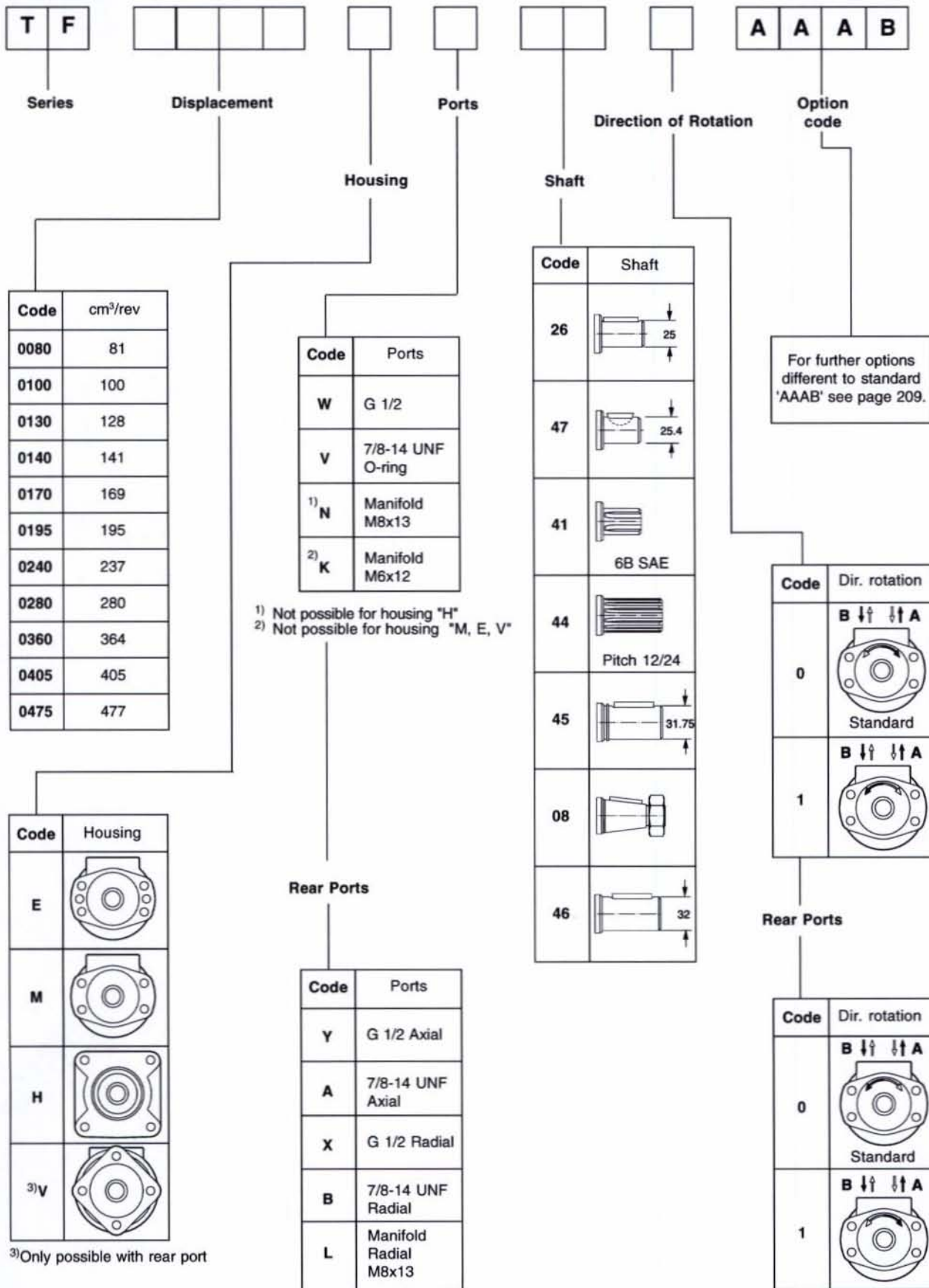
TF	cm ³ /rev	rev/min	cont / int l/min	cont / int bar	bar	cont / int Nm	max KW	Side loads
TF 80	81	550/730	45/60	200/280	300	215/295	19	TF 16.000 N
TF 100	100	600/750	60/75	160/240	300	210/315	21	
TF 130	128	470/580	60/75	140/200	300	240/350	19	
TF 140	141	370/530	60/75	140/200	300	250/390	18	
TF 170	169	355/440	60/75	140/200	300	330/485	19	
TF 195	197	300/380	60/75	140/200	300	380/560	19	
TF 240	238	320/420	75/100	140/200	300	460/685	24	
TF 280	280	270/350	75/100	140/200	300	550/800	24	
TF 360	364	200/260	75/100	130/200	300	590/910	24	
TF 405	405	170/230	75/100	130/175	300	650/910	21	
TF 475	477	150/200	75/100	115/140	300	680/850	17	

TG/BG TH	cm ³ /rev	rev/min	cont / int l/min	cont / int bar	bar	cont / int Nm	max KW	Side loads
TG/BG, TH 140	140	530/710	75/100	200/280	300	400/ 545	33	TG/BG 16.000 N TH 30.000 N
TG/BG, TH 170	169	440/575	75/100	200/280	300	485/ 670	33	
TG/BG, TH 195	195	380/510	75/100	200/280	300	560/ 770	33	
TG/BG, TH 240	237	320/420	75/100	200/280	300	685/ 945	32	
TG/BG, TH 280	280	270/350	75/100	200/280	300	800/1100	31	
TG/BG, TH 335	337	225/290	75/100	200/280	300	980/1350	30	
TG/BG, TH 405	405	185/245	75/100	170/240	300	960/1350	27	
TG/BG, TH 475	476	160/240	75/115	140/200	300	960/1400	28	
TG/BG, TH 530	529	140/215	75/115	140/170	300	1050/1280	23	
TG/BG, TH 625	624	120/185	75/115	120/160	300	1040/1360	20	
TG/BG, TH 785	786	95/145	75/115	100/140	300	1150/1490	17	
TG/BG, TH 960	958	78/119	75/115	70/100	300	925/1390	12	

int. = Intermittent operation rating applies to 10% of every minute.

Ordering Code

1

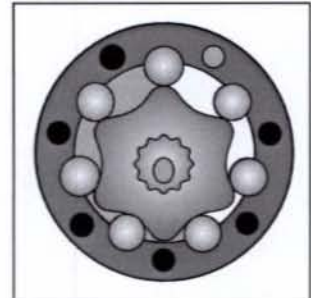
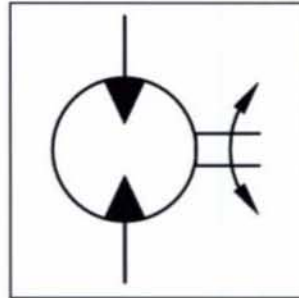


Performance

**Torqmotor
Series TF**

1

Speed	5...750 rev/min
Oil flow	max. 100 l/min
Supply pressure	max. 300 bar
Torque	max. 900 Nm
Side load	max. 16.000 N



TF

	Geometric displacement	Max. speed	Max. oil flow	Max. differential pressure	Max. supply pressure	Max. torque	Max. performance	Min. starting torque
Motor-Series TF	cm ³ /rev	rev/min	cont / int l/min	cont / int bar	bar	cont / int Nm	max KW	cont / int Nm
TF 80	81	550/730	45/60	200/280	300	215/295	19	172/236
TF 100	100	600/750	60/75	160/240	300	210/315	21	168/252
TF 130	128	470/580	60/75	140/200	300	240/350	19	192/280
TF 140	141	370/530	60/75	140/200	300	250/390	18	197/308
TF 170	169	355/440	60/75	140/200	300	330/485	19	264/388
TF 195	197	300/380	60/75	140/200	300	380/560	19	304/448
TF 240	238	320/420	75/100	140/200	300	460/685	24	368/548
TF 280	280	270/350	75/100	140/200	300	550/800	24	440/640
TF 360	364	200/260	75/100	130/200	300	590/910	24	510/780
TF 405	405	170/230	75/100	130/175	300	650/910	21	575/789
TF 475	477	150/200	75/100	115/140	300	680/850	17	603/740

int. = Intermittent operation rating applies to 10% of every minute.

Accessories

Option Code	Description	Series TF	Series TG	Series TH	Series BG	For further options please request Parker sales organisation
AAAA	Black paint	X	X	X	X	
AAAH	FPM seals	X	X			
AABP	Castle nut	X	X	X	X	
AAFX	Shuttle valve	X	X	X	X	
BBBF	Internal relief valve 200 bar	X	X	X	X	
BBBJ	Internal relief valve 100 bar	X	X	X	X	
BBBM	Internal relief valve 70 bar	X	X	X	X	
BBBN	Internal relief valve 140 bar	X	X	X	X	
BBCG	Internal relief valve 170 bar	X	X	X	X	
HAAF	External relief valve 100 bar (M6)	X	X			
HAAP	External relief valve 100 bar (M8)	X	X			
HAAH	External relief valve 140 bar (M6)	X	X			
HAAU	External relief valve 140 bar (M8)	X	X			
HAAK	External relief valve 170 bar (M6)	X	X			
HAAX	External relief valve 170 bar (M8)	X	X			
HAAM	External relief valve 200 bar (M6)	X	X			
HABA	External relief valve 200 bar (M8)	X	X			
JAAB	Motor-brake combination 11 bar	X				
JAAD	Motor-brake combination 16 bar	X				
JAAG	Motor-brake combination 22 bar	X				
JAAJ	Motor-brake combination 11 bar	X	X			
JAAL	Motor-brake combination 16 bar	X	X			
JAAN	Motor-brake combination 22 bar	X	X			
JAAT	Motor-brake combination 22 bar	X	X			
JAAW	Motor-brake combination 22 bar	X	X			

1