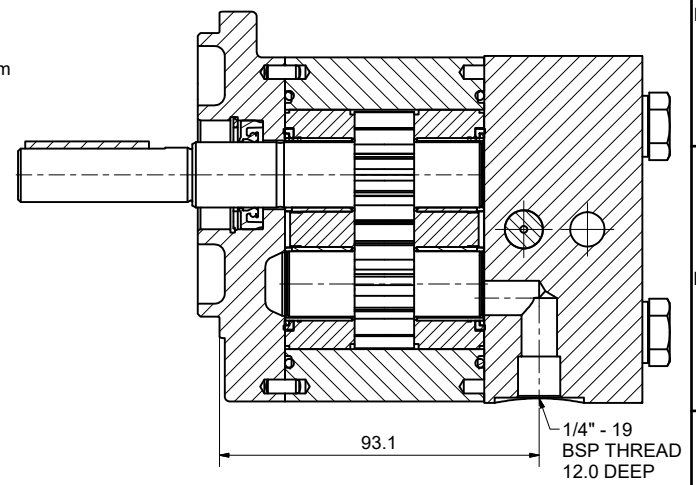
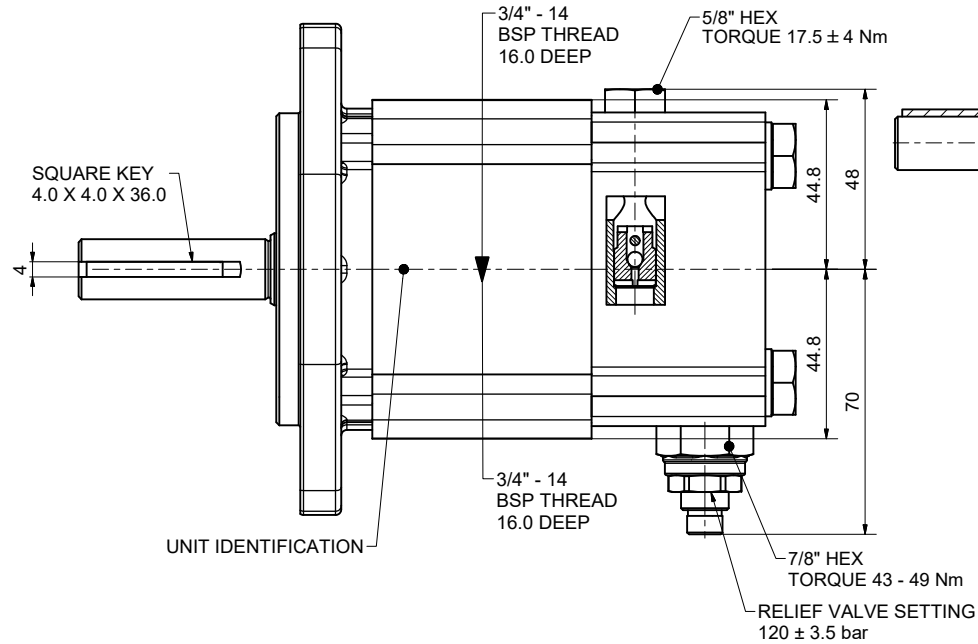
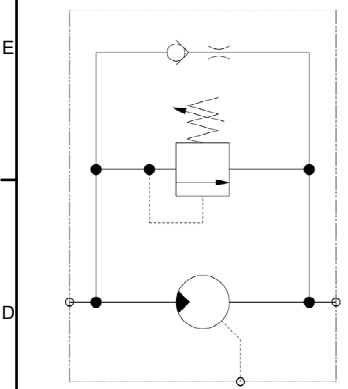
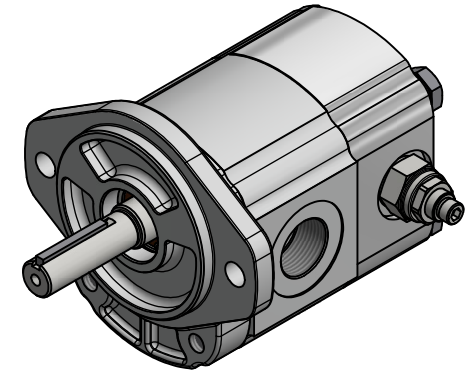
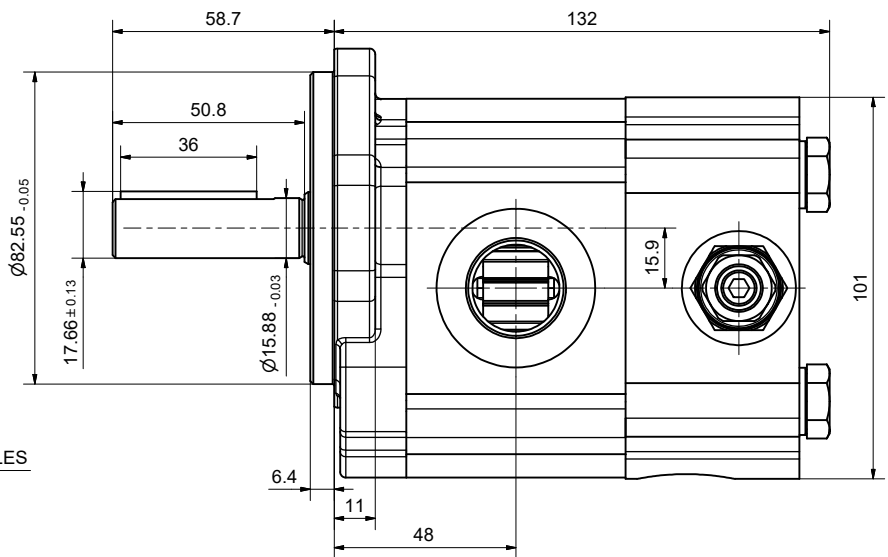
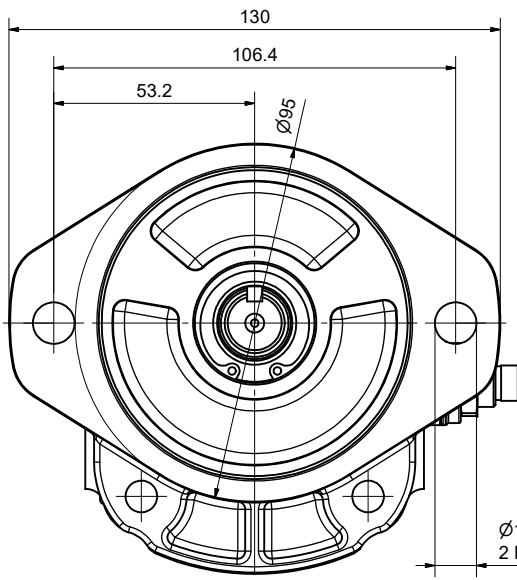


MOTOR DATA		
DISPLACEMENT	11.0	ccm
MAXIMUM PRESSURE	SEE VALVE DATA *	
SPEED RATE	500 TO 5000	rpm
MAX. CONTINUOUS LIP SEAL OR DRAIN LINE PRESSURE	3.2	bar
ROTATION	CLOCKWISE	

* NOTE: RUN - IN MOTOR TO 200 bar



NOTE:
 1 FOR ASSEMBLY INSTRUCTIONS, SEE dwg. "511-B2" "PGM511 ASSEMBLY INSTRUCTIONS".
 2 NAMEPLATE LOCATION MAY VARY DUE TO DESIGN CRITERIA OR MANUFACTURING LOCATION



ALL SURFACES MUST BE PAINTED, EXCEPT:
 - FLANGE SPIGOT AND MOUNTING FACE
 - PORT AREAS AND SEAL FACES.
 - NAMEPLATES WITHOUT PAINT PROTECTION FILM
 COLOR: BLACK (RAL 9005) SEE ZSS - A1

SEWR-NR:
19-01-903

TOLERANCES UNLESS OTHERWISE SPECIFIED = REF. DIMENSIONS

Parker PARKER HANNIFIN CORPORATION			
PUMP AND MOTOR DIVISION EUROPE Neefstraße 96 Chemnitz 09116			
DESCRIPTION PGM511D0110CK4H2KE5E5RDAMG2			
ECD 0274090	DRAWN BY TG	DATE 11.01.2019	MATERIAL
ECD DATE 11.01.2019	CHECKED BY JS	APPROVED BY	
ISO UNITS	UNITS MM	MASS 3,1 kg	DRAWING NO.
SHEET 1 of 1	SCALE 1:1		3349210227
<small>THIS DOCUMENT AND THE INFORMATION IT CONTAINS IS CONFIDENTIAL AND PROPRIETARY TO PARKER HANNIFIN CORPORATION AND ITS APPLICABLE DIVISIONS. IT MAY NOT BE COPIED OR DISCLOSED TO OTHERS OR USED FOR ANY PURPOSE OTHER THAN THAT FOR WHICH IT WAS PREPARED. ANY UNAUTHORIZED REPRODUCTION OR DISCLOSURE IS PROHIBITED. THE USER OF THIS DOCUMENT IS ADVISED THAT IMPROPER SELECTION OR IMPROPER USE OF PARKER SYSTEMS OR COMPONENTS CAN CAUSE DEATH, PERSONAL INJURY AND PROPERTY DAMAGE, AND IS SOLELY RESPONSIBLE FOR PROTECTING HIMSELF AND OTHERS FOR THE FINAL SELECTION OF PARKER SYSTEMS AND COMPONENTS AND ASSURING THAT ALL PERFORMANCE, DURABILITY, SAFETY AND WARNING REQUIREMENTS OF THE INTENDED APPLICATION ARE MET. COPYRIGHT PARKER. YEAR OF COPYRIGHT IS THE YEAR(S) INDICATED ON THIS DOCUMENT. ALL RIGHTS RESERVED.</small>			REV. -