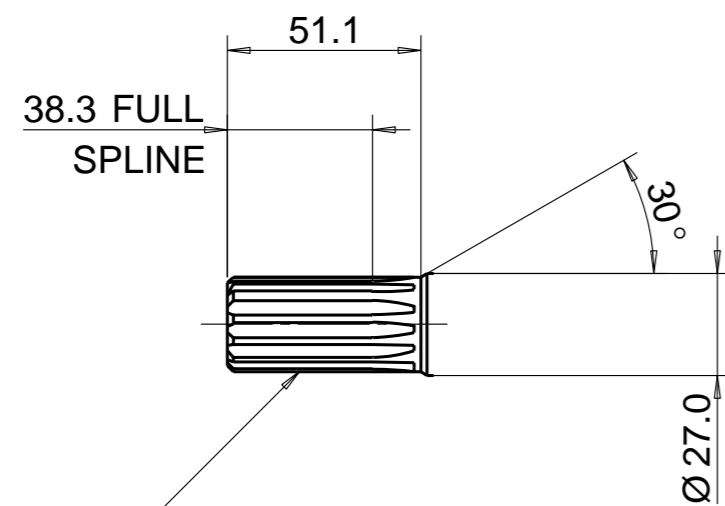
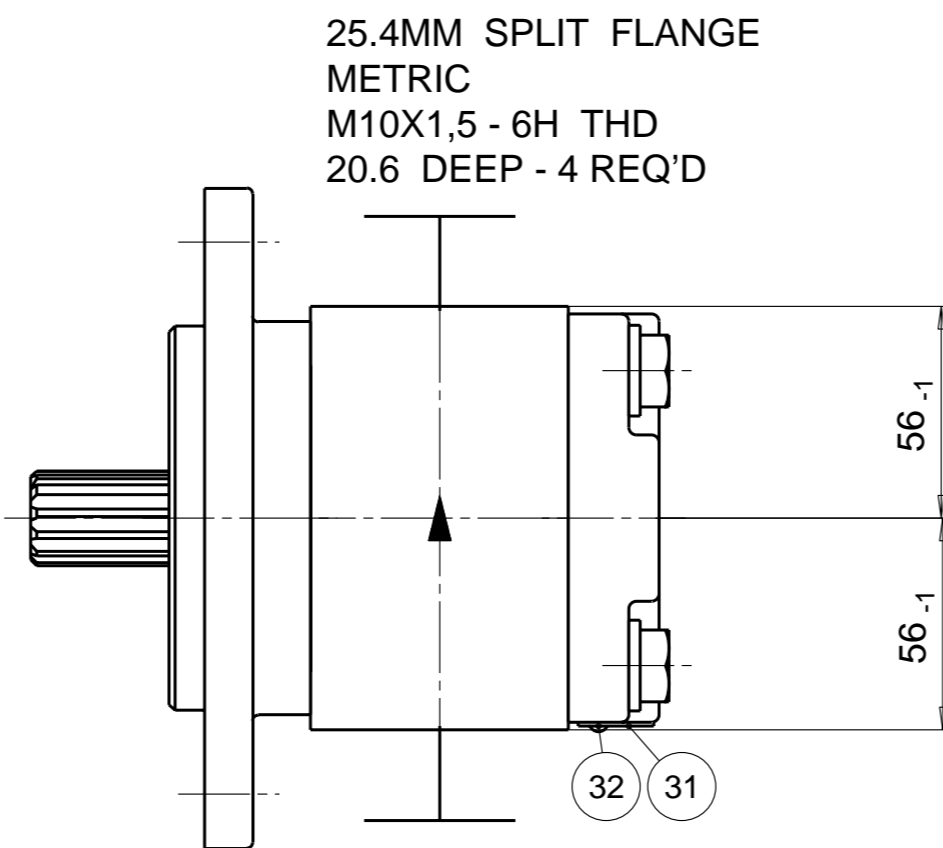
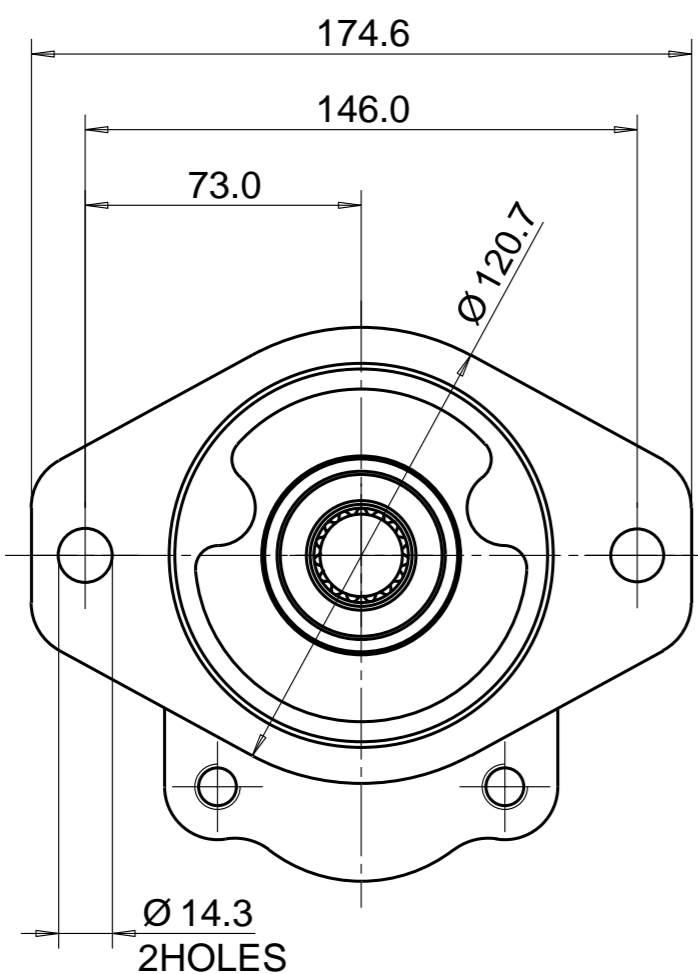


PUMP DATA	
DISPLACEMENT	14,0 ccm
MAX. PRESSURE	250 bar
SPEED RATE	500 TO 3400 min ⁻¹
MAX. INPUT SHAFT TORQUE	530 Nm
ROTATION	ANTI CLOCKWISE

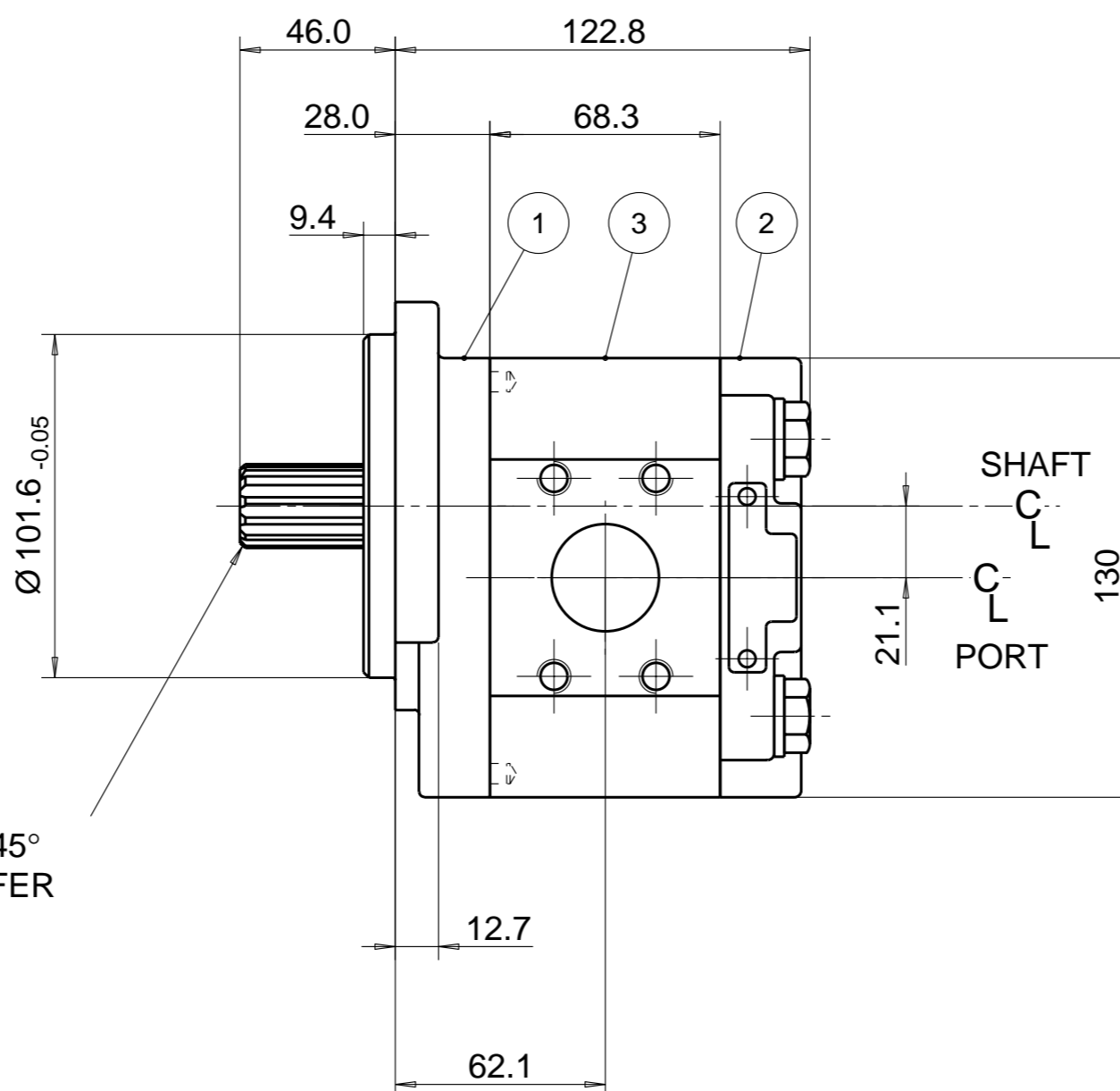


SAE INVOLUTE SPLINE
15 TEETH - 16/32 PITCH
FLAT ROOT SIDE FIT
MAJOR DIA: 24.84-24.97
MINOR DIA 21.793 MAX.



25.4MM SPLIT FLANGE
METRIC
M10X1,5 - 6H THD
20.6 DEEP - 4 REQ'D

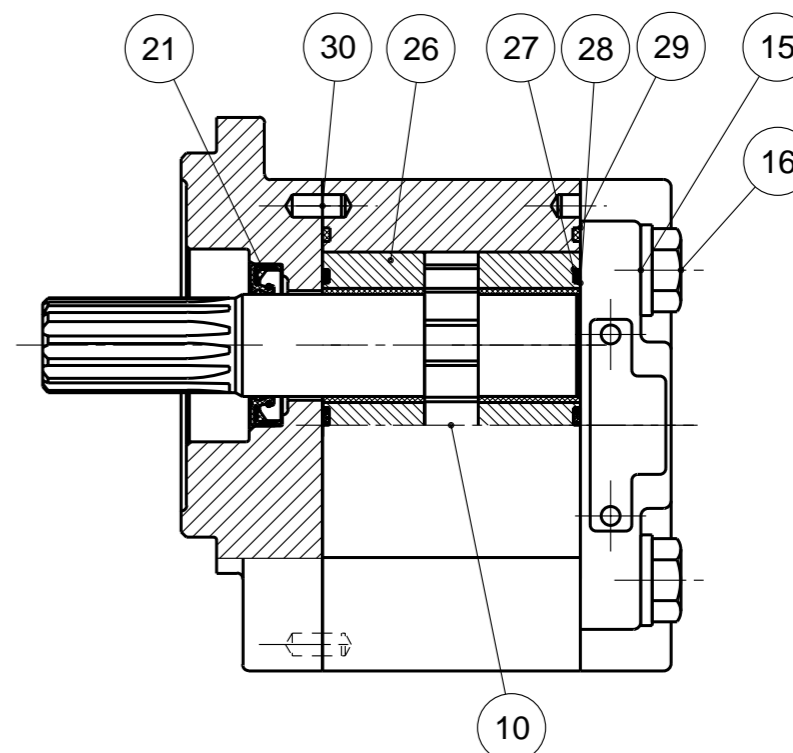
31.7MM SPLIT FLANGE
METRIC
M10X1.5 - 6H THD
20.6 DEEP - 4 REQ'D



1.5 x 45°
CHAMFER



UNIT COMPLETELY TO BE PAINTED
EXCEPT : MOUNTING FACE
PORTS
SEAL FACES
NAMEPLATE
COLOUR : BLACK (RAL 9005) SEE ZSS - A1



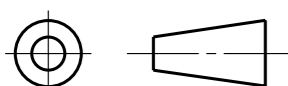
NOTE

1 FOR ASSEMBLY INSTRUCTIONS SEE DWG. NO. "517-B1"
"PGP517 PUMP ASSEMBLY INSTRUCTIONS".

28	391 2882 162	2	SEAL. BK-UP	36			
27	391 2882 161	2	SEAL. CHAN.	35			
26	391 2185 093	2	THRBLK/BSHG	34			
25				33			
24				32	391 1432 004	2	SCREW. DR.
23				31	391 2183 227	1	NAMEPLATE
22				30	391 2080 080	2	PIN. DOWEL
21	391 2883 058	1	SEAL. LIP	29	391 2882 148	2	SEAL. SECT.
ITEM	PART NO	REQD		ITEM	PART NO	REQD	

20							
19							
18							
17							
16	391 1401 549	4	CAPSCREW (110 MM)				
15	391 3782 232	4	WASHER				
14							
13							
12							
11							
10	333 2914 380	1	SET, GEAR SHAFT				
9							
8							
7							
6							
5							
4							
3	333 8114 978	1	HOUSING. GEAR				
2	333 3000 100	1	HOUSING. PEC				
1	333 5020 203	1	HOUSING. SEC				
ITEM	PART NO	REQ'D					DESCRIPTION

THIRD ANGLE PROJECTION



EXP NO.

FIRST USED

06 - 05 - 918

333 9112 099

A BLACK PAINTED ADDED

SYM. REVISIONS 14MAR14 AS 14-03-930

THIS DOCUMENT CONTAINS INFORMATION THAT IS CONFIDENTIAL AND PROPRIETARY TO PARKER-HANNIFIN CORPORATION ("PARKER"). THIS DOCUMENT IS FURNISHED ON THE UNDERSTANDING THAT THE DOCUMENT AND THE INFORMATION IT CONTAINS WILL NOT BE COPIED OR DISCLOSED TO OTHERS OR USED FOR ANY PURPOSE OTHER THAN CONDUCTING BUSINESS WITH PARKER, AND WILL BE RETURNED AND ALL FURTHER USE DISCONTINUED UPON REQUEST BY PARKER. ALL RIGHTS RESERVED.

PGP517A0140AE1H3NT4T3B1B1

MATERIAL

H.E.-STD:

ADM CTR P
REV DTE 14MAR14

WT 7.9 kg

DIMENSIONS ARE MM

Parker Pump & Motor Division
Chemnitz

DR.BY DATE CH.BY DATE SCALE
WS 05MAY06 JS 05MAY06 1/2

333 9112 099

© 2014 Parker Hannifin Corporation