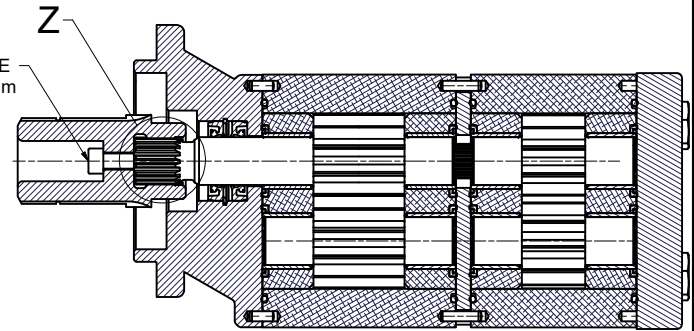
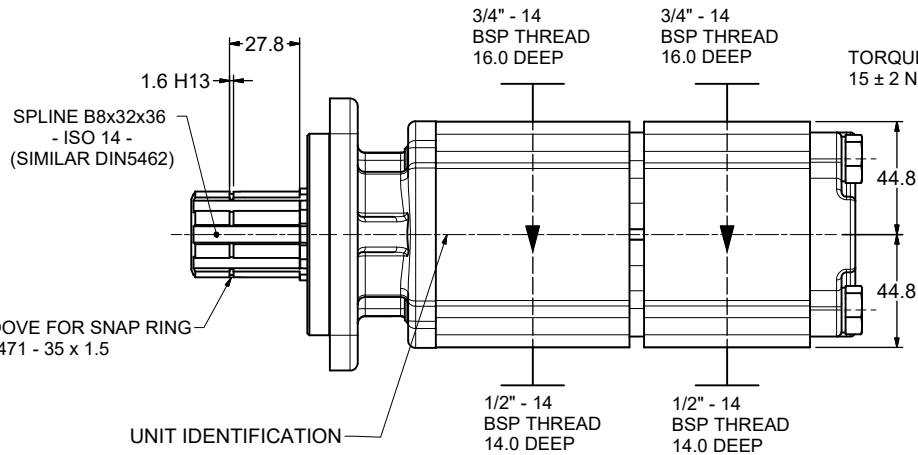
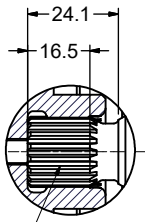


PUMP DATA	PUMP I	PUMP II
DISPLACEMENT	23.0 ccm	16.0 ccm
MAXIMUM PRESSURE	225 bar	250 bar
SPEED RATE	500 TO 1600 rpm	
MAX. INPUT SHAFT TORQUE	166 Nm	
ROTATION	CLOCKWISE	

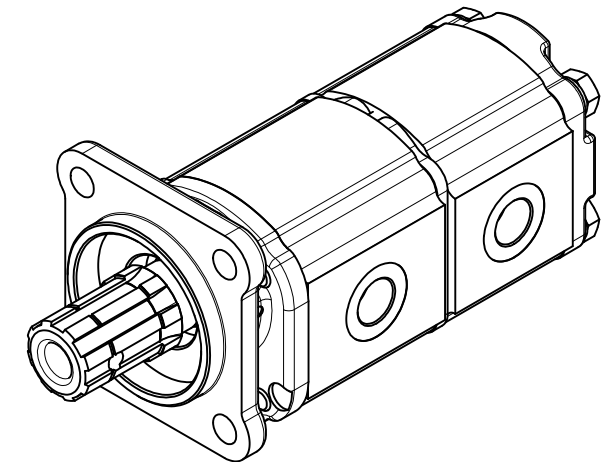
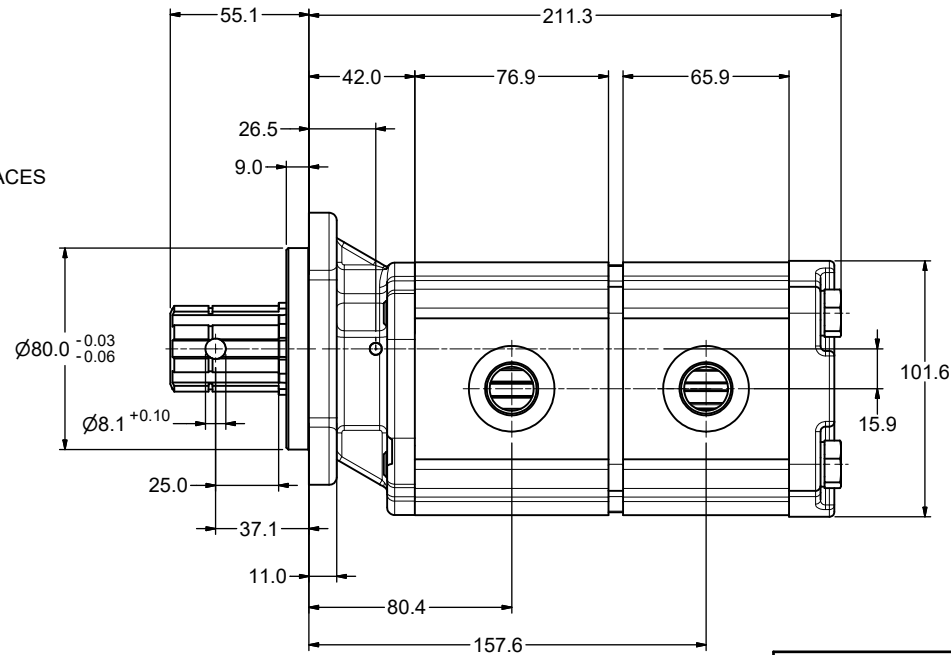
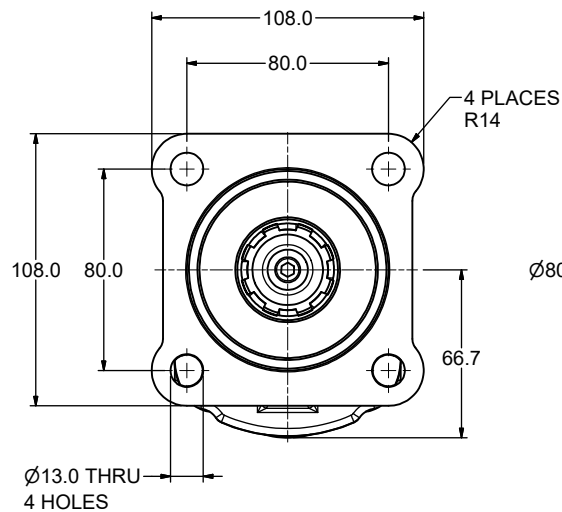


NOTE:
FOR ASSEMBLY INSTRUCTIONS, SEE DWG. "511-B1"
"P511 ASSEMBLY INSTRUCTIONS".

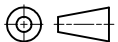
DETAIL "Z"



SAE INVOLUTE SPLINE
17 TEETH - 24/48 PITCH
FLAT ROOT SIDE FIT
MAJOR DIA. 18.593 - 18.720
MINOR DIA. 16.619



THIRD ANGLE PROJECTION



EXP NO.

FIRST USED

20-03-925

20-03-925prop

SYM. REVISIONS

NOT APPROVED PROPOSAL

THIS DOCUMENT CONTAINS INFORMATION THAT IS CONFIDENTIAL AND PROPRIETARY TO PARKER-HANNIFIN CORPORATION ("PARKER"). THIS DOCUMENT IS FURNISHED ON THE UNDERSTANDING THAT THE DOCUMENT AND THE INFORMATION IT CONTAINS WILL NOT BE COPIED OR DISCLOSED TO OTHERS OR USED FOR ANY PURPOSE OTHER THAN CONDUCTING BUSINESS WITH PARKER, AND WILL BE RETURNED AND ALL FURTHER USE DISCONTINUED UPON REQUEST BY PARKER. ALL RIGHTS RESERVED.

Parker Pump & Motor Division
Chemnitz

PGP511B0230CF5C3ME5E3S-511A0160XE5E3B1B1

MATERIAL

REV
LEVEL

Tolerances Unless Otherwise Specified
} Ref.
DIMENSIONS

DR. BY DATE CH. BY DATE
AS 26MAR20 JS 26MAR20

H.E.-STD: REV DATE

000000

20-03-925prop

WT. 7.5 kg

DIMENSIONS ARE mm

© 2020 Parker Hannifin Corporation