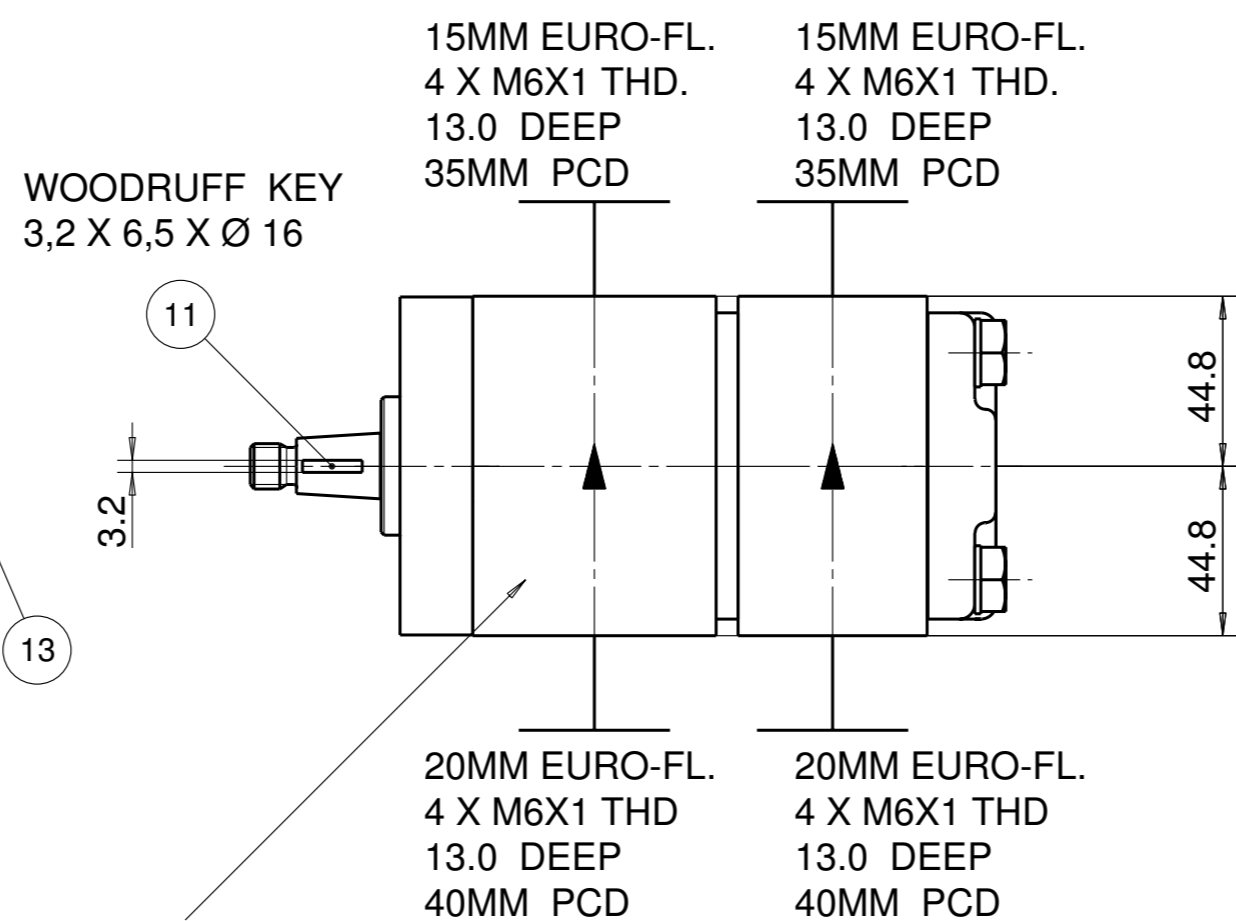
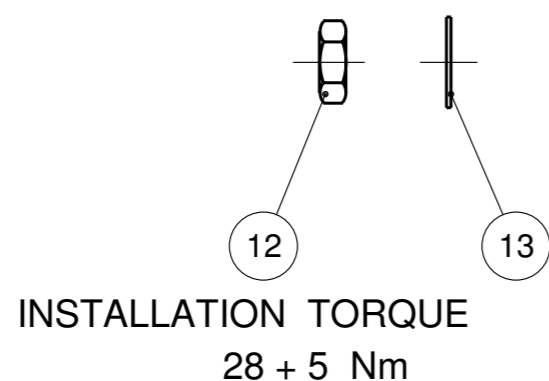
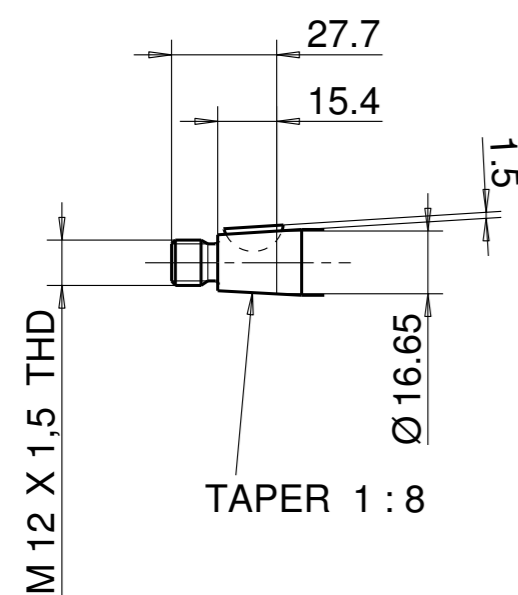
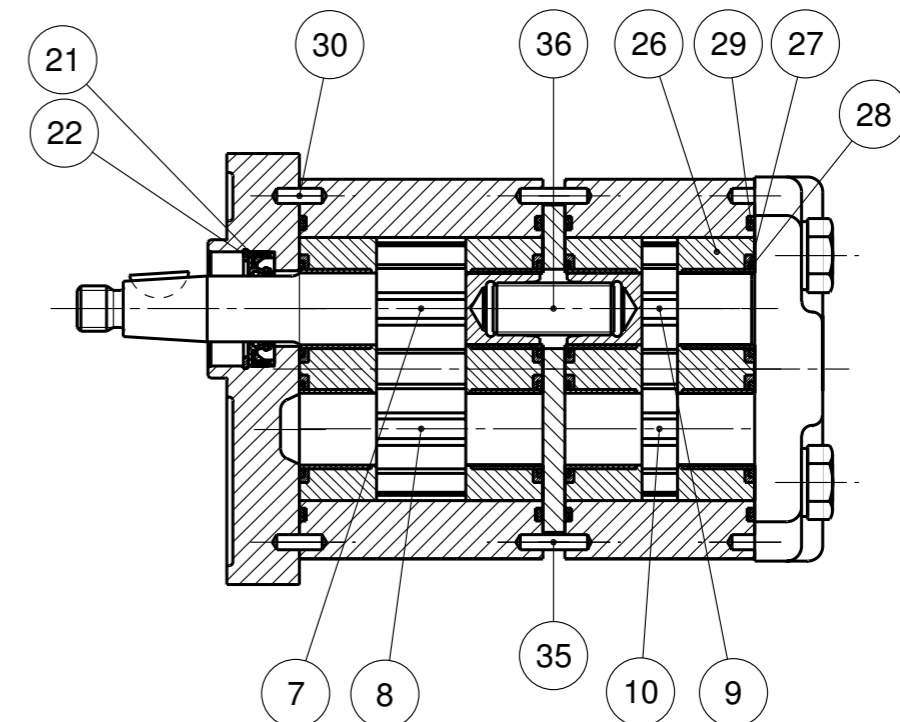


PUMP DATA	FRONT PUMP	REAR PUMP
DISPLACEMENT	15,0 ccm	6,0 ccm
MAX. PRESSURE	250 bar	250 bar
SPEED RATE	500 min <sup>-1</sup>	TO 3100 min <sup>-1</sup>
MAX. INPUT SHAFT TORQUE	198 Nm	
ROTATION	ANTI CLOCKWISE	

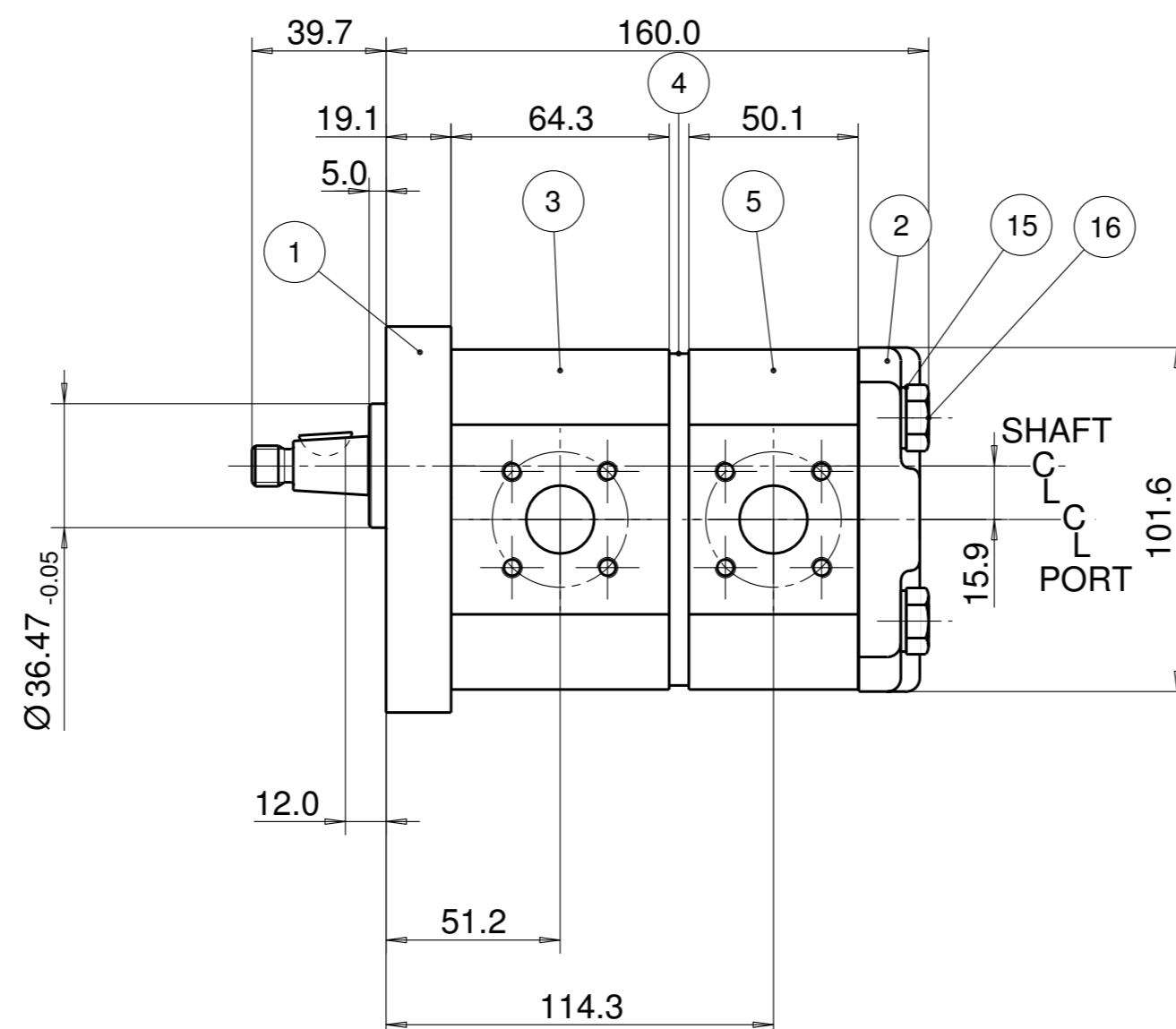
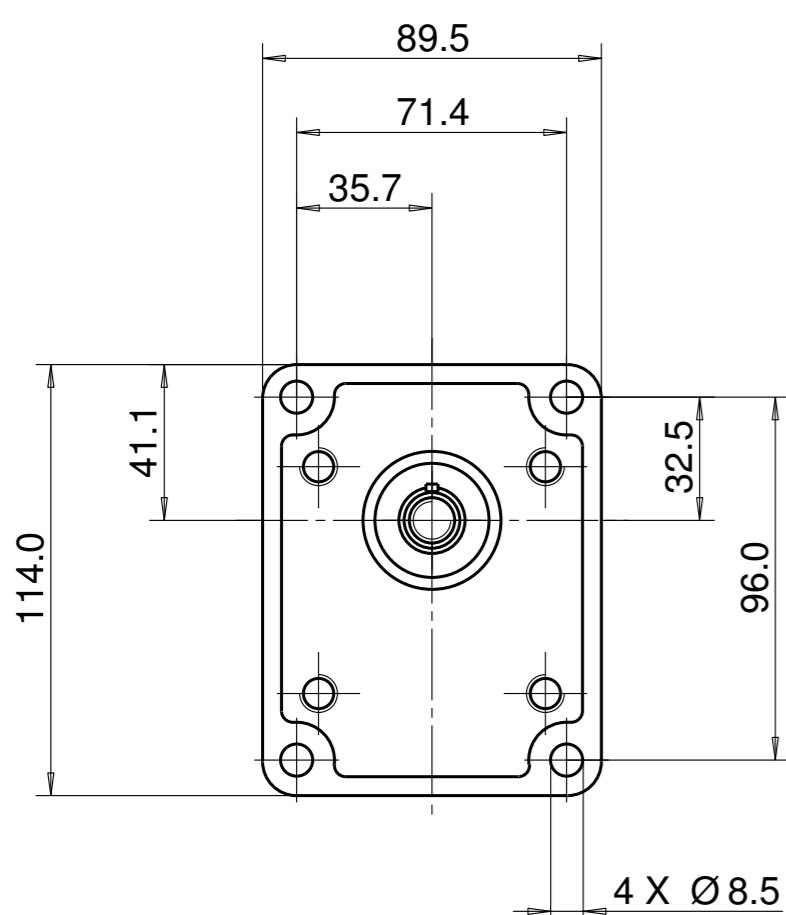


UNIT IDENTIFICATION  
(NAMEPLATE)  
ON END COVER  
OR ON GEAR HOUSING



**NOTE**

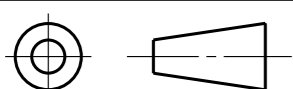
1 FOR ASSEMBLY INSTRUCTIONS SEE DWG. NO. "511-B1"  
"PGP511 PUMP ASSEMBLY INSTRUCTIONS".



ITEM	PART NO	REQD	ITEM	PART NO	REQD
28	8611-015-000	4	SEAL. BK-UP	36	332 1133 001
27	8611-016-00R	4	SEAL. CHAN.	35	391 2080 079
26	8898-207-00U	4	THRBLK/BSHG	34	
25				33	
24				32	
23				31	
22	9211-323-00B	1	RING, SNAP	30	391 2080 078
21	8301-019-00K	1	SEAL. LIP	29	9313-145-00B

ITEM	PART NO	REQ'D	DESCRIPTION
20			
19			
18			
17			
16	391 1401 564	4	FASTENER (150mm)
15	391 3782 231	4	WASHER
14			
13	391 3782 307	1	WASHER
12	391 1451 168	1	NUT
11	391 1781 112	1	KEY
10	334 2706 000	1	DRIVEN GEAR
9	334 2606 000	1	DRIVE GEAR
8	334 2715 000	1	DRIVEN GEAR
7	334 1915 601	1	DRIVE GEAR
6			
5	334 8106 901	1	HOUSING. GEAR
4	391 2183 232	1	PLATE, MID
3	334 8115 901	1	HOUSING. GEAR
2	332 3000 100	1	HOUSING. PEC
1	334 5041 202	1	HOUSING. SEC

THIRD ANGLE PROJECTION



EXP NO.

FIRST USED

06 - 12 - 916

334 9122 269

SYM.

REVISIONS

THIS DOCUMENT CONTAINS INFORMATION THAT IS CONFIDENTIAL AND PROPRIETARY TO PARKER-HANNIFIN CORPORATION ("PARKER"). THIS DOCUMENT IS FURNISHED ON THE UNDERSTANDING THAT THE DOCUMENT AND THE INFORMATION IT CONTAINS WILL NOT BE COPIED OR DISCLOSED TO OTHERS OR USED FOR ANY PURPOSE OTHER THAN CONDUCTING BUSINESS WITH PARKER, AND WILL BE RETURNED AND ALL FURTHER USE DISCONTINUED UPON REQUEST BY PARKER. ALL RIGHTS RESERVED.

PGP511B0150AS2D3NJ7J5S-511A0060XJ7J5B1B1

MATERIAL

H.E.-STD:

ADM CTR P

REV DTE 000000

WT 6.8 kg

DIMENSIONS ARE MM

**Parker** Pump & Motor Division  
Chemnitz

DR. BY DATE CH. BY DATE SCALE  
WS 07DEC06 JS 07DEC06 1/2

**334 9122 269**

© 2006 Parker Hannifin Corporation