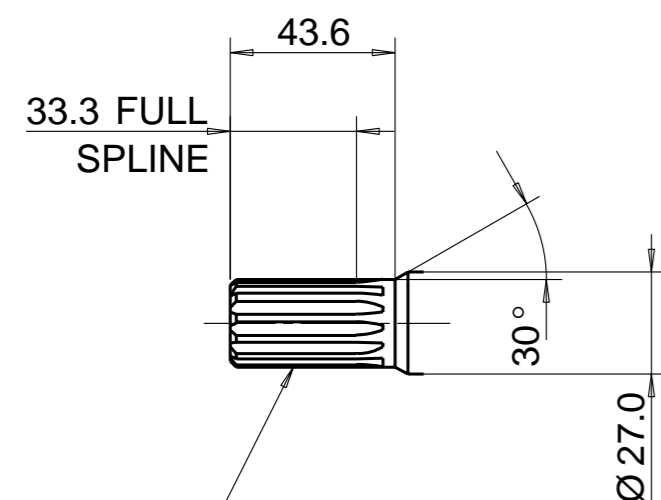
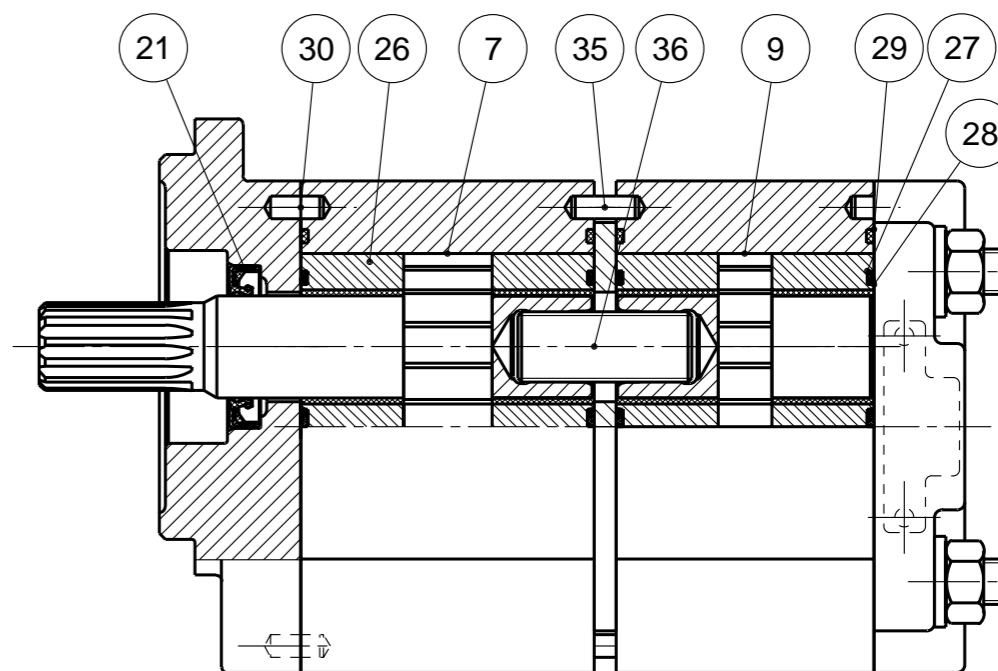
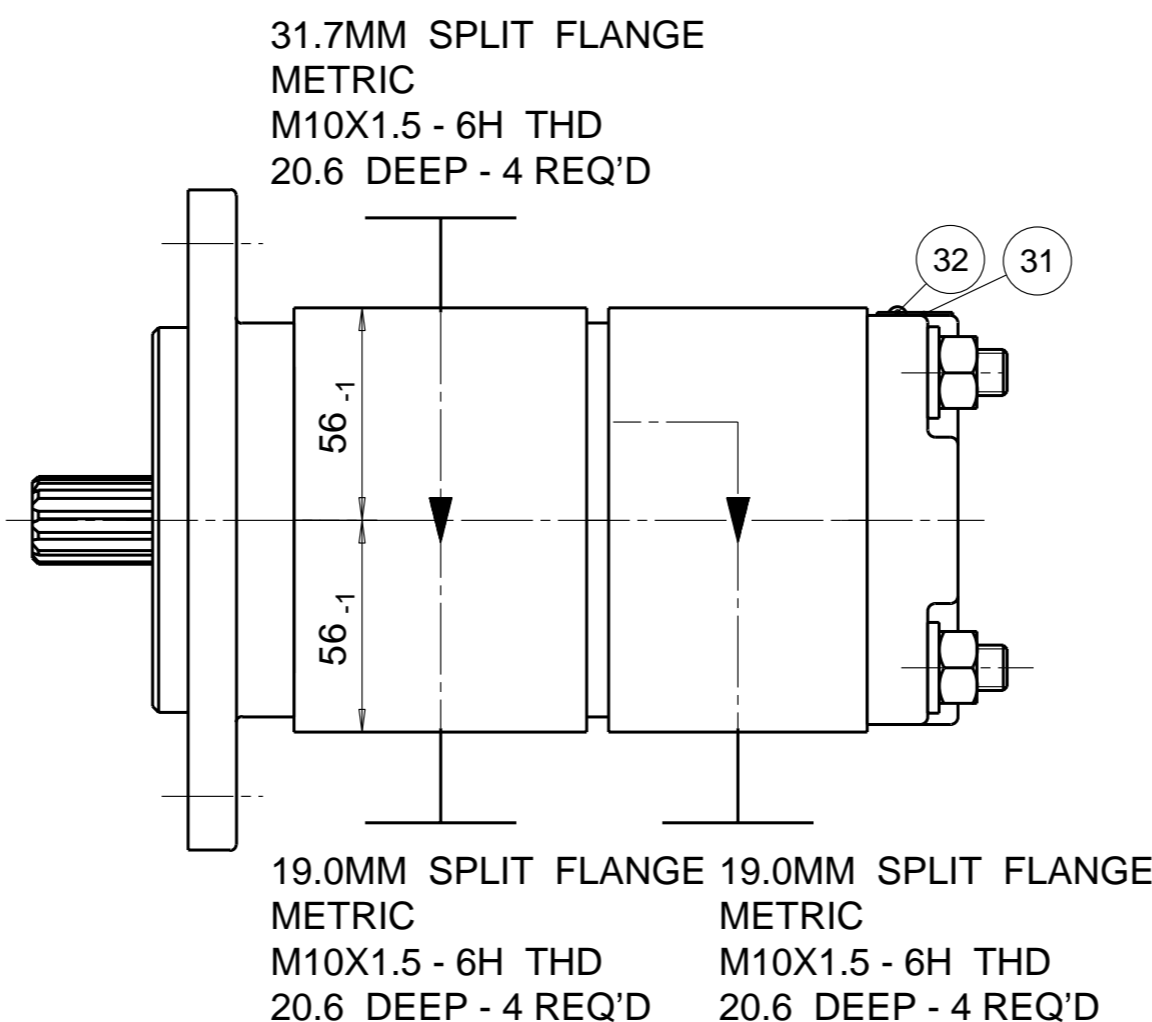
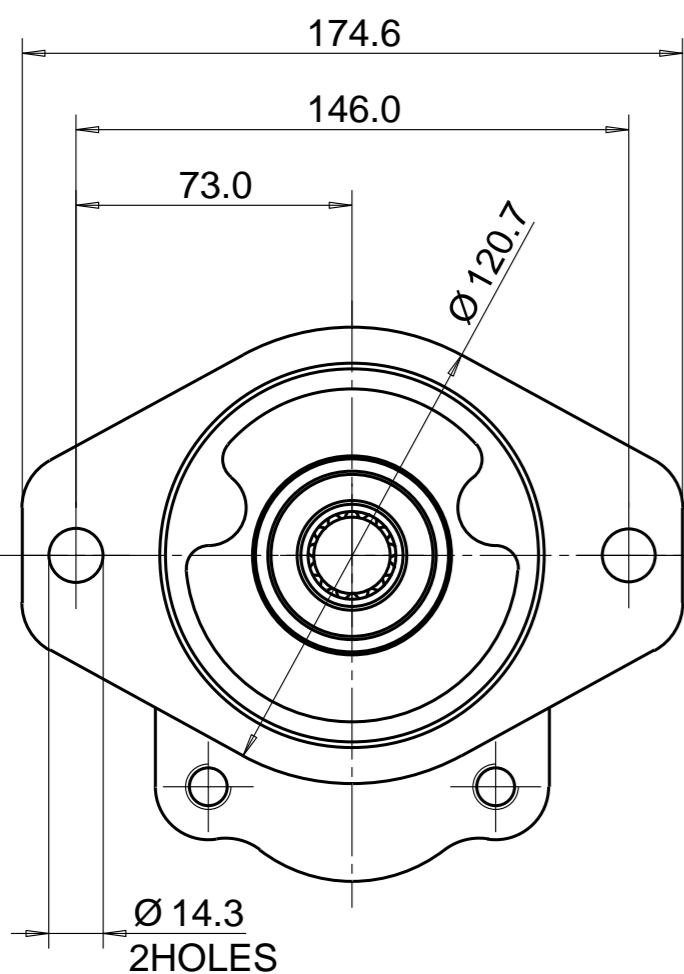


PUMP DATA	PUMP I	PUMP II
DISPLACEMENT	23,0 ccm	14,0 ccm
MAX. PRESSURE	250 bar	250 bar
SPEED RATE	500 TO 3200 min <sup>-1</sup>	
MAX. INPUT SHAFT TORQUE	345 Nm	
ROTATION	CLOCKWISE	

CUSTOMER PART NUMBER: **55196508** A1



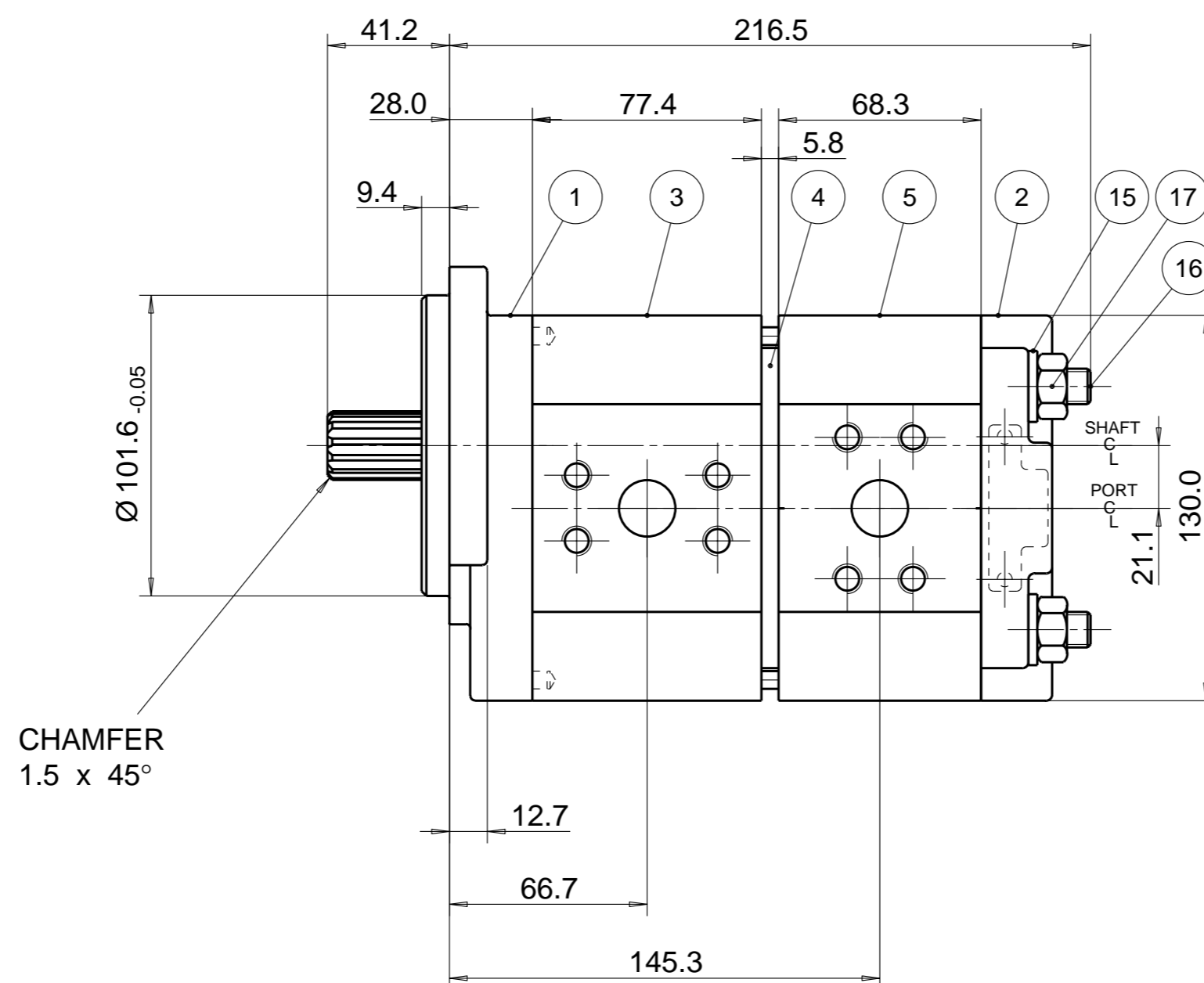
SAE INVOLUTE SPLINE  
13 TEETH - 16/32 PITCH  
FLAT ROOT SIDE FIT  
MAJOR DIA 21.67-21.79  
MINOR DIA 18.631 MAX.



**NOTE**

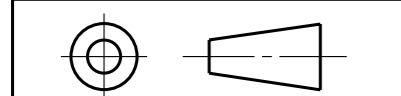
- 1 FOR ASSEMBLY INSTRUCTIONS SEE DWG. NO. "517-B1" "PGP517 PUMP ASSEMBLY INSTRUCTIONS".
- 2 NAMEPLATE LOCATION MAY VARY DUE TO DESIGN CRITERIA OR MANUFACTURING LOCATION. OPTIONAL FOR #31 & #32 GLUED LABEL 391 2183 396

ITEM	PART NO	REQD	DESCRIPTION	ITEM	PART NO	REQD	DESCRIPTION
28	391 2882 162	4	SEAL. BK-UP	36	324 1133 001	1	SFT, CONN.
27	391 2882 161	4	SEAL. CHAN.	35	391 2080 081	2	PIN, DOWEL
26	391 2185 093	4	THRBLK/BSHG	34			
25				33			
24				32	391 1432 004	2	SCREW. DR.
23				31	391 2183 227	1	NAMEPLATE
22				30	391 2080 080	2	PIN. DOWEL
21	391 2883 104	1	SEAL. LIP	29	391 2882 263	4	SEAL. SECT.



ITEM	PART NO	REQ'D	DESCRIPTION
20			
19			
18			
17	391 1451 149	4	NUT
16	391 1425 644	4	STUD DIN 939 -190MM -10.9
15	391 3782 232	4	WASHER
14			
13			
12			
11			
10			
9	333 2814 000	1	SET, GEAR
8			
7	333 2923 440	1	SET, GEAR SHAFT
6			
5	73330:4121523	1	HOUSING, GEAR
4	391 2183 238	1	PLATE, MID
3	333 8423 519	1	HOUSING. GEAR
2	333 3000 100	1	HOUSING. PEC
1	333 5020 203	1	HOUSING. SEC

THIRD ANGLE PROJECTION



EXP NO.

FIRST USED

10 - 09 - 994

333 9121 292

A1 CPN ADDED

SYM. REVISIONS 14OCT10 RP 10-10-952-2

THIS DOCUMENT CONTAINS INFORMATION THAT IS CONFIDENTIAL AND PROPRIETARY TO PARKER-HANNIFIN CORPORATION ("PARKER"). THIS DOCUMENT IS FURNISHED ON THE UNDERSTANDING THAT THE DOCUMENT AND THE INFORMATION IT CONTAINS WILL NOT BE COPIED OR DISCLOSED TO OTHERS OR USED FOR ANY PURPOSE OTHER THAN CONDUCTING BUSINESS WITH PARKER, AND WILL BE RETURNED AND ALL FURTHER USE DISCONTINUED UPON REQUEST BY PARKER. ALL RIGHTS RESERVED.

PGP517B0230CD1H3VP4P2C-517A0140XB1T2B1B1

MATERIAL

H.E.-STD:

ADM CTR P  
REV DTE 14OCT10

WT 11.6 kg

DIMENSIONS ARE MM

**Parker** Pump & Motor Division  
Chemnitz

DR.BY DATE CH.BY DATE SCALE  
RP 27SEP10 JS 27SEP10 1/2

**333 9121 292**

© 2010 Parker Hannifin Corporation