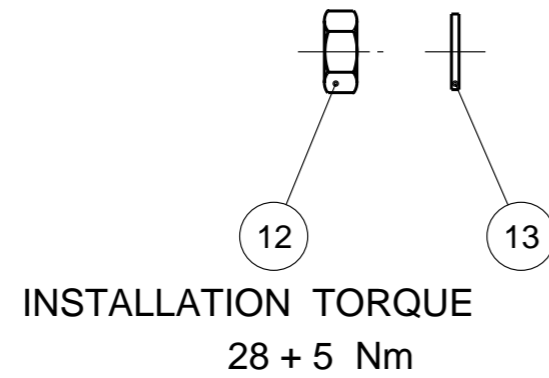
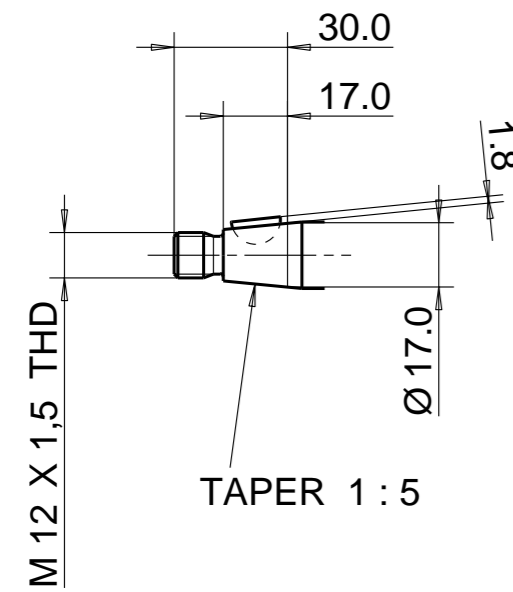
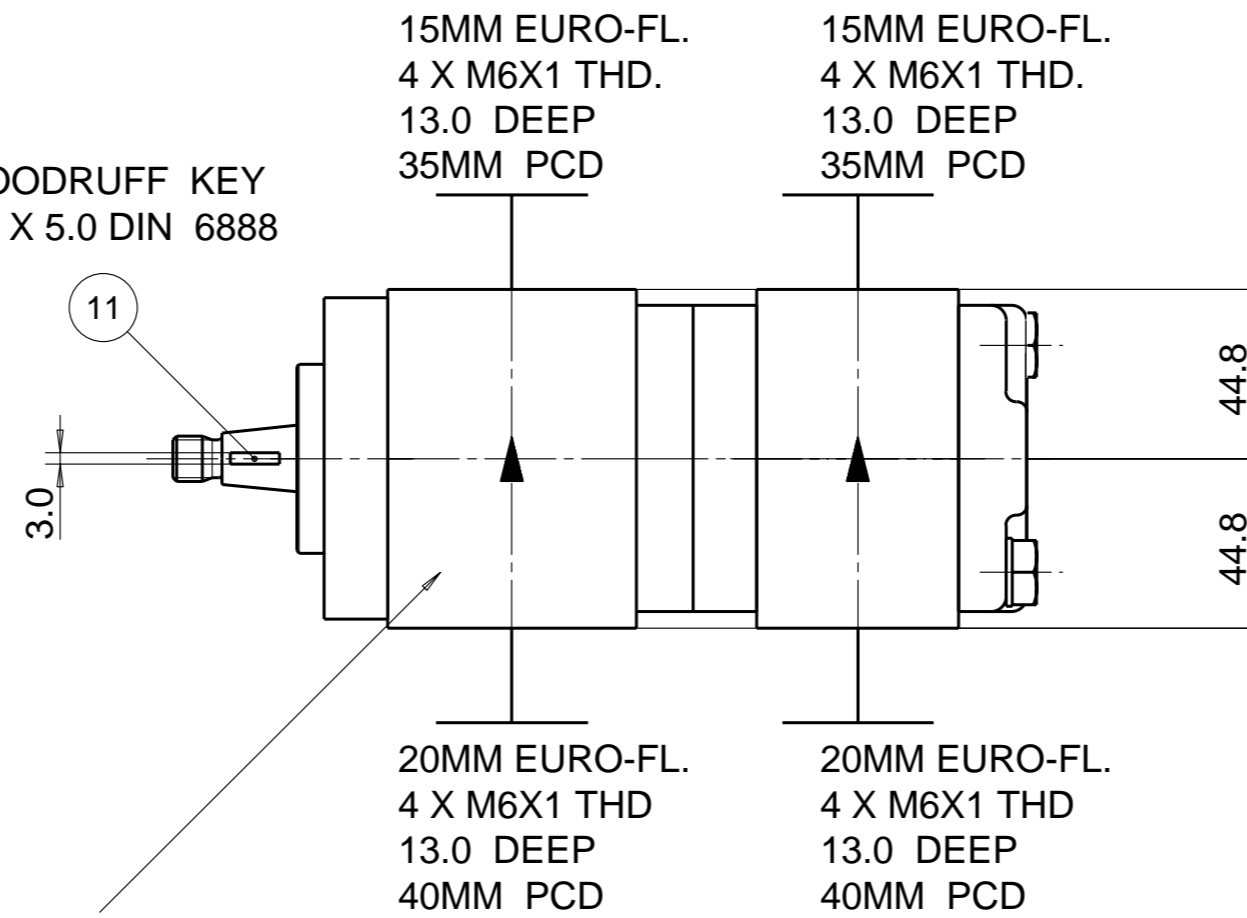


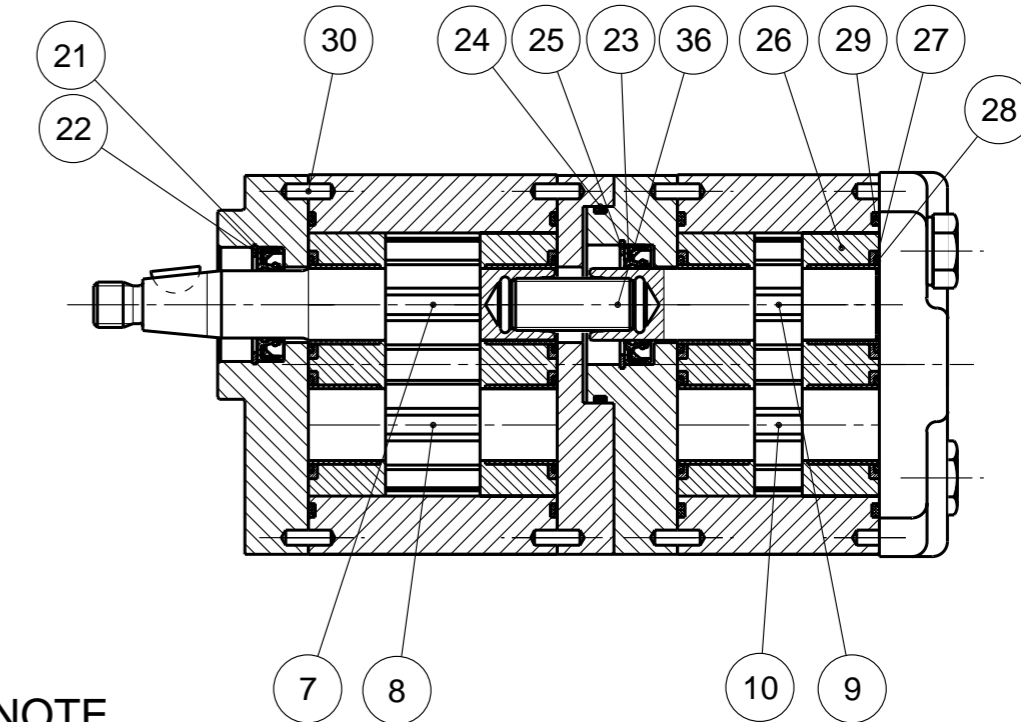
PUMP DATA	FRONT PUMP	REAR PUMP
DISPLACEMENT	16,0 ccm	8,0 ccm
MAX. PRESSURE	250 bar	250 bar
SPEED RATE	500 min ⁻¹	TO 3000 min ⁻¹
MAX. INPUT SHAFT TORQUE	193 Nm	
ROTATION	ANTI CLOCKWISE	



WOODRUFF KEY
3,0 X 5,0 DIN 6888

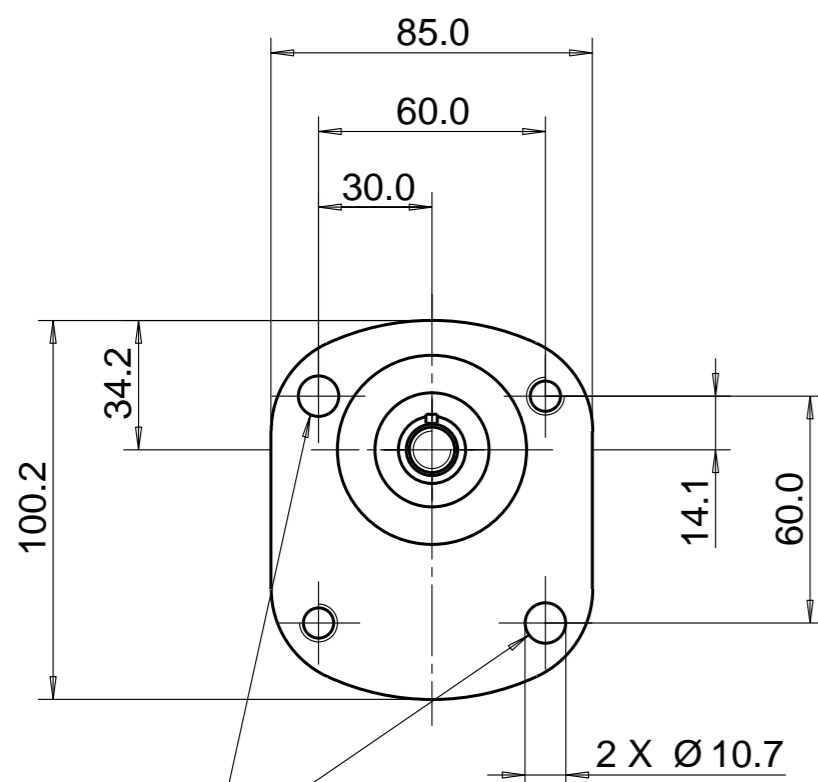


UNIT IDENTIFICATION
(NAMEPLATE)
ON END COVER
OR ON GEAR HOUSING

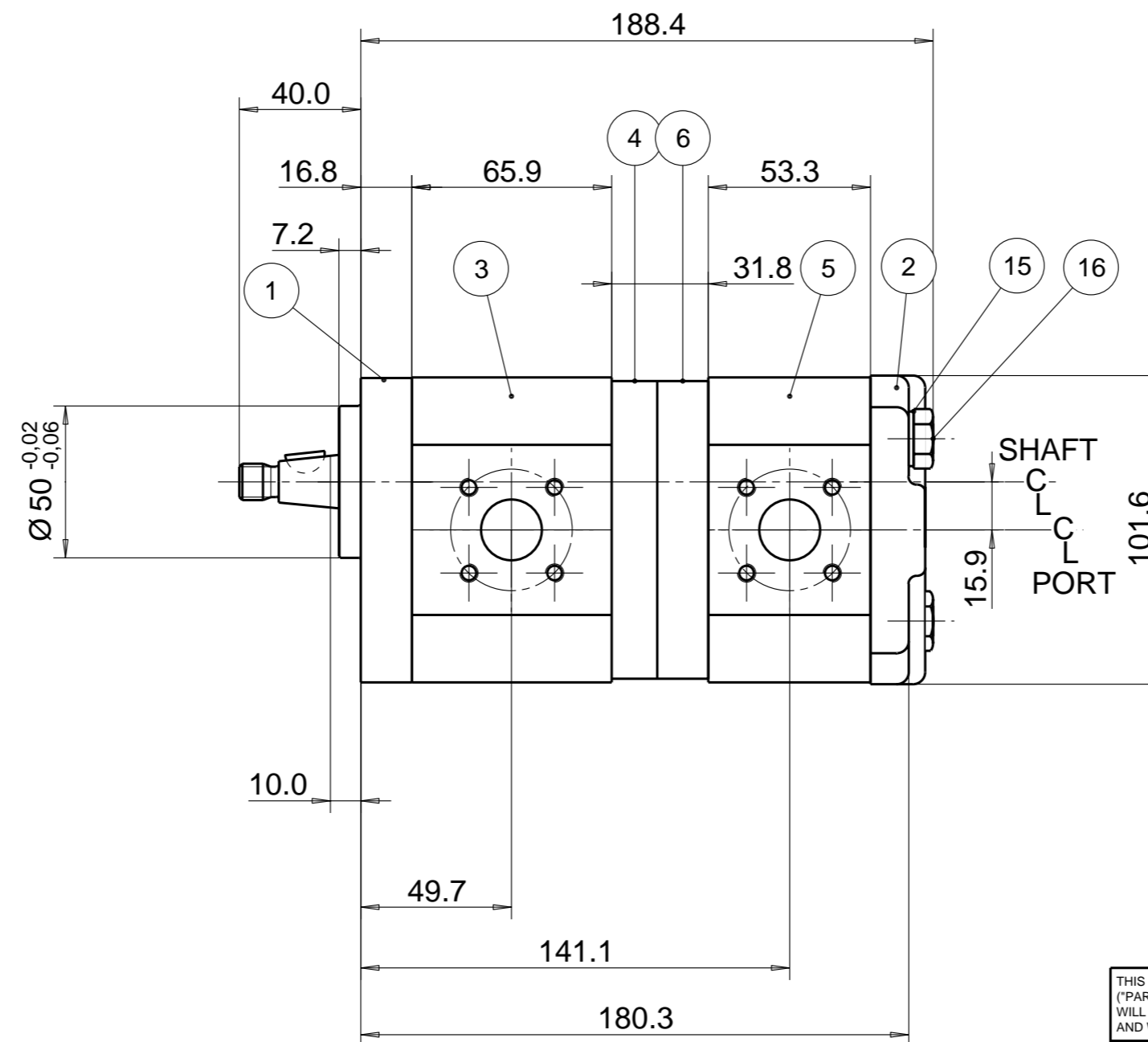


NOTE

1 FOR ASSEMBLY INSTRUCTIONS SEE DWG. NO. "511-B1"
"PGP511 PUMP ASSEMBLY INSTRUCTIONS".



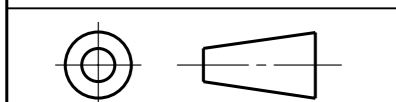
MOUNTING HOLES
2 X M10 - 8.8
TORQUE 42+5 Nm



ITEM	PART NO	REQD	DESCRIPTION	ITEM	PART NO	REQD	DESCRIPTION
28	8611-015-000	4	SEAL. BK-UP	36	332 1133 001	1	SHAFT,CONN
27	8611-016-00R	4	SEAL. CHAN.	35			
26	8898-207-00U	4	THRBLK/BSHG	34			
25	9211-325-003	1	RING, SNAP	33			
24	391 2882 187	1	O - RING	32			
23	9352-061-00T	1	SEAL, LIP	31			
22	9211-323-00B	1	RING, SNAP	30	391 2080 078	6	PIN. DOWEL
21	8301-019-00K	1	SEAL. LIP	29	9313-145-00B	4	SEAL. SECT.

ITEM	PART NO	REQ'D	DESCRIPTION
20			
19			
18			
17			
16	391 1401 570	2	FASTENER (180mm)
15	391 3782 231	2	WASHER
14			
13	391 3782 259	1	WASHER
12	391 1451 160	1	NUT
11	391 1781 099	1	KEY
10	334 2708 000	1	DRIVEN GEAR
9	334 2608 003	1	DRIVE GEAR
8	334 2716 000	1	DRIVEN GEAR
7	334 1916 600	1	DRIVE GEAR
6	334 5051 205	1	HOUSING, SEC
5	334 8108 901	1	HOUSING. GEAR
4	334 5050 208	1	HOUSING, PEC
3	334 8116 901	1	HOUSING. GEAR
2	332 3000 100	1	HOUSING. PEC
1	334 5051 202	1	HOUSING. SEC

THIRD ANGLE PROJECTION



EXP NO.

FIRST USED

07 - 09 - 928

334 9122 288

SYM.

REVISIONS

THIS DOCUMENT CONTAINS INFORMATION THAT IS CONFIDENTIAL AND PROPRIETARY TO PARKER-HANNIFIN CORPORATION ("PARKER"). THIS DOCUMENT IS FURNISHED ON THE UNDERSTANDING THAT THE DOCUMENT AND THE INFORMATION IT CONTAINS WILL NOT BE COPIED OR DISCLOSED TO OTHERS OR USED FOR ANY PURPOSE OTHER THAN CONDUCTING BUSINESS WITH PARKER, AND WILL BE RETURNED AND ALL FURTHER USE DISCONTINUED UPON REQUEST BY PARKER. ALL RIGHTS RESERVED.

PGP511B0160AS1Q4NJ7J5S-511A0080NJ7J5B1B1

MATERIAL

ADM CTR P

REV DTE 000000

H.E.-STD:

WT 7.5 kg

DIMENSIONS ARE MM

Parker Pump & Motor Division
Chemnitz

DR.BY DATE CH.BY DATE SCALE
WS 18SEP07 JS 18SEP07 1/2

334 9122 288

© 2007 Parker Hannifin Corporation