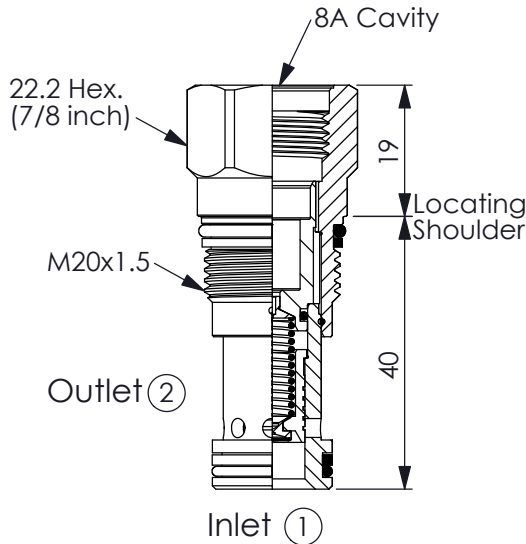
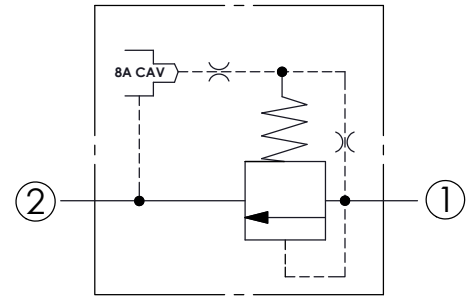


(Pilot operated, balanced piston relief main stage with integral 8A control cavity)

Ordering Code: **RP-10A-X-Y-8**



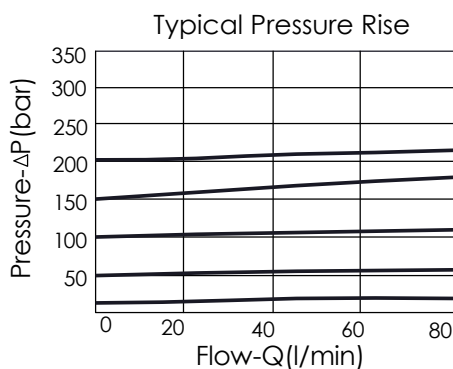
UNIT:mm



TECHNICAL DATA

| | |
|-------------------------|----------|
| Max.Operating pressure: | 350 bar |
| Rated flow: | 95 l/min |
| Cavity-Tooling: | 10A-2 |
| Installation torque: | 40-50 Nm |
| Weight: | 0.09 kg |

Will accept maximum pressure at port 2; suitable for use in cross port relief circuits. If used in cross port relief circuits, consider spool leakage.



X OPERATION

20 1 to 2 (P to T)

Response Time-Typical (10 ms)
Maximum Leakage (33 cc/min./70 bar)

Y

SPRINGS

MINIMUM CONTROL PRESSURE

D

1.7 bar (25 psi)

W

7 bar (100 psi)

W spring is suit for higher pressure drop application. Please consult our sales department.