

Item	Spare Part	Dimensions	Code no.	Number per motor					
				Series 8*		Series 7 with separate spigot flange			
				OMP Flange A2	OMP Flange A2	OMP C Flange A2	OMP Flange A4	OMP Flange C	OMPW OMPW N
1	Screw	M6: L = 16 M5: L = 16 M6: L = 16	681X1989 681X1961 681X0247		6		6	6	
3	Dust seal ring ø25 mm, ø1", 1" spl. shaft (HPS) ø28.5 mm tapered shaft ø25 mm shaft ø32 mm shaft	35.0 • 27.5 • 2.2 mm 28.56 • 35.0 • 4.0 mm 35.0 • 28.5 • 4.0 mm 42.0 • 35.0 • 3.5 mm	633B0370 151-1313 633B0010 633B3198	1	1	1	1	1	1
4	Spigot flange ø25 mm, ø1", 1" spl. shaft (HPS) ø25 mm, ø1", 1" spl. shaft ø25 mm shaft ø25 mm shaft ø25 mm 35 mm tapered shaft ø32 mm shaft, (HPS) ø32 mm shaft		151-5588 151-5458 151-5473 151-1827  151-1978 151-5589 151-1734		1 1	1		1	1
5	Shaft seal ø25 mm, ø1", 1" spl. shaft (HPS) ø25 mm, ø1", 1" spl. 28.5 mm tapered shaft ø25 mm, ø1", 1" spl. shaft 28.5 mm tapered shaft ø32 mm shaft, (HPS) ø32 mm shaft	39.0 • 28.6 • 4.9 mm, HSN 42.0 • 28.6 • 5.5 mm, NBR 42.0 • 28.6 • 5.5 mm, FPM 46.0 • 35.0 • 4.6 mm 48.0 • 35.0 • 5.5 mm	633B0361 633B3385 633B0323 633B0363 633B3273	1	1	1 1	1 1	1 1	1
6	O-ring ø25 mm, ø1", 1" spl. 28.5 mm tapered shaft ø25 mm ø32 mm shaft	47.2 • 3.5 mm, NBR 48.0 • 2.0 mm, NBR 53.0 • 2.0 mm, NBR	633B1191 633B1333 633B1528		1	1	1	1	1
7	Bearing race ø25 mm, ø1", 1" spl. shaft ø25 mm, ø1", 1" spl. shaft 28.5 mm tapered shaft ø32 mm shaft	41.6 • 29.0 • 4.0 mm 47.5 • 29.5 • 3.0 mm 47.5 • 29.5 • 2.4 mm 52.0 • 35.0 • 3.5 mm	151-5708 151-1608 151-1931 981X0095	1	1	1	1	1	1 1
8	Axial needle bearing ø25 mm, ø1", 1" spl. shaft ø25 mm, ø1", 1" spl. shaft 28.5 mm tapered shaft ø32 mm shaft	42.0 • 28.7 • 4.5 mm	151-5709 151-1458 981X0008 981X3198	1	1	1	1	1	1 1

NBR: (Buna N, Perbunan)

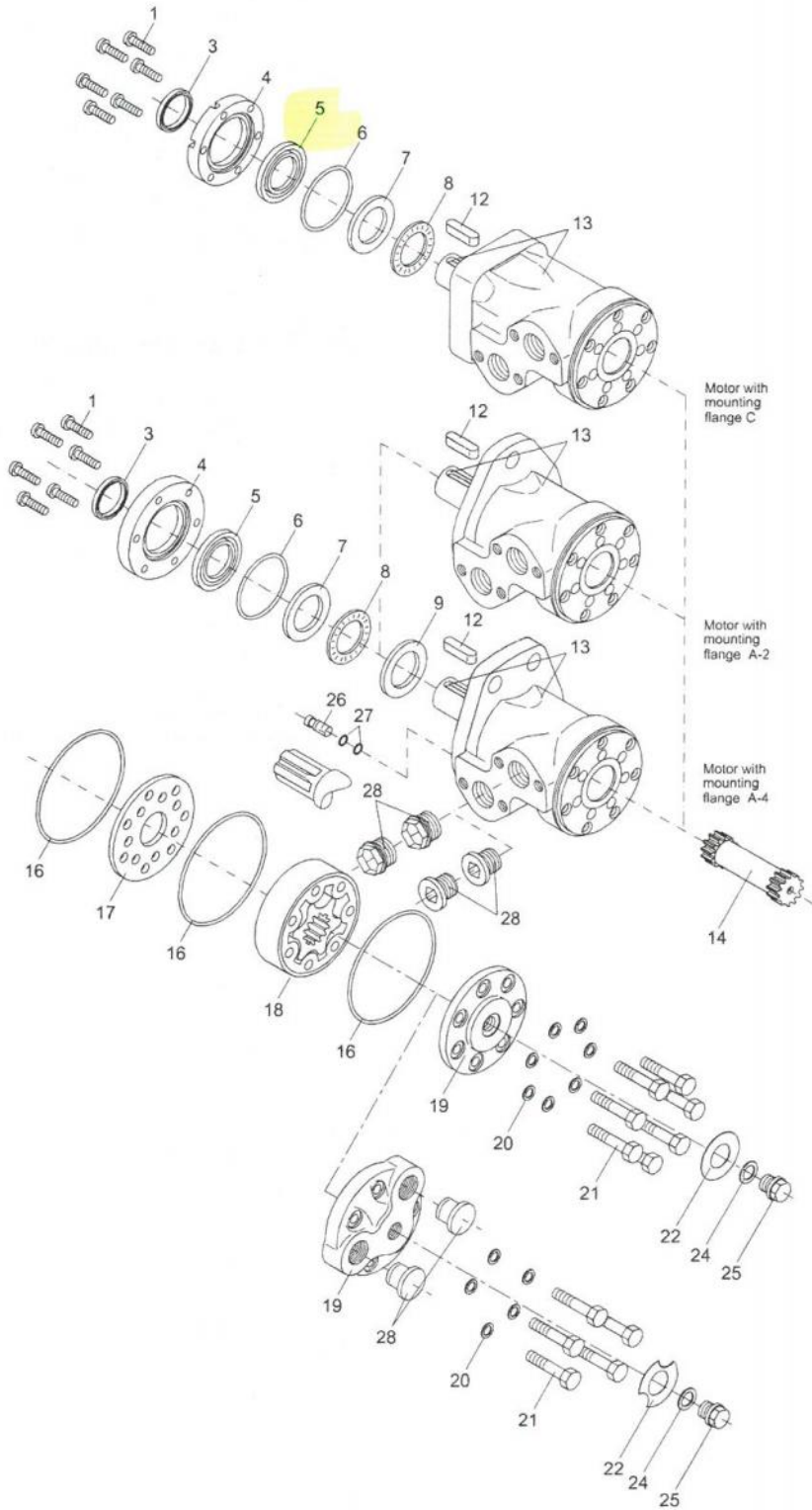
FPM: Viton (ISO 1629)

HPS: High pressure shaft seal

\*Series 8 with integrated spigot flange



**Exploded View OMP  
and OMP C,  
Metric Version  
Series 7 with  
Separate Spigot Flange**



151-1768.10