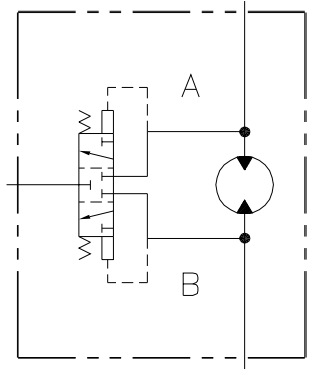


TG0960HV080AAFX	58.5 [960]	10.33 [262.4]
TG0785HV080AAFX	48.0 [785]	9.58 [243.3]
TG0625HV080AAFX	38.0 [625]	8.83 [224.3]
TG0530HV080AAFX	32.3 [530]	8.45 [214.7]
TG0475HV080AAFX	29.1 [475]	8.20 [208.4]
TG0405HV080AAFX	24.7 [405]	7.87 [199.9]
TG0360HV080AAFX	22.2 [360]	7.70 [195.7]
TG0335HV080AAFX	20.6 [335]	7.58 [192.5]
TG0310HV080AAFX	19.0 [310]	7.45 [189.3]
TG0280HV080AAFX	17.1 [280]	7.33 [186.1]
TG0240HV080AAFX	14.5 [240]	7.14 [181.4]
TG0195HV080AAFX	11.9 [195]	6.95 [176.6]
TG0170HV080AAFX	10.3 [170]	6.83 [173.4]
TG0140HV080AAFX	8.6 [140]	6.70 [170.3]

MOTOR ASSY PART NO	DISPLACEMENT in ³ /rev [cm ³ /rev]	"Z"
--------------------	--	-----



NOTE:
 THE RADIAL LOAD OF UP TO 4000 LBS. [1814 kg] MAY BE ALLOWABLE AT A DISTANCE OF 2.75 [69.9] FROM THE MOUNTING FACE. RADIAL LOAD IS CONSIDERED THE VECTOR SUM OF THE RADIAL FORCES ACTING ON THE SHAFT, SUCH AS: CHAIN PULL, GEAR FORCES AND OR WEIGHT ON A DRIVEN WHEEL. SEE SIDeload RATING CURVES FOR FURTHER DETAIL. CONTACT YOUR SALES ENGINEER FOR THIS COMPUTATION.

ALL DIMENSIONS ARE FOR REFERENCE ONLY

ASSEMBLY DRAWING: TG-BDS01

										REF: TG0000HV080AAAT										Parker Hannifin Corp. Hydraulic Pump/Motor Division Greenville, TN, 37744 USA			
										SUPERSEDES:										PROCESS: PT-941			
										MATERIAL:										APPR:			
										TITLE: HYDRAULIC MOTOR ASSEMBLY CHART										APPR:			
										DRAWING NO: TG0000HV080AAFX										REV A			
										SCALE: FULL													
										A 5-15676 RELD FOR PROD										ZMCREV16DE03			
REV	EDR NO.	DESCRIPTION	DRN	APP	DATE	REV	EDR NO.	DESCRIPTION	DRN	APP	DATE	REV	EDR NO.	DESCRIPTION	DRN	APP	DATE	REV	EDR NO.	DESCRIPTION	DRN	APP	DATE