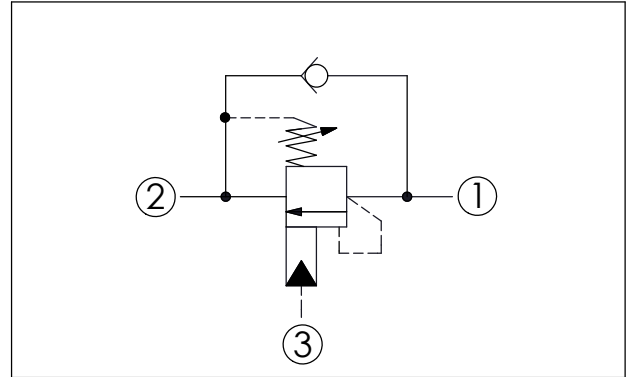
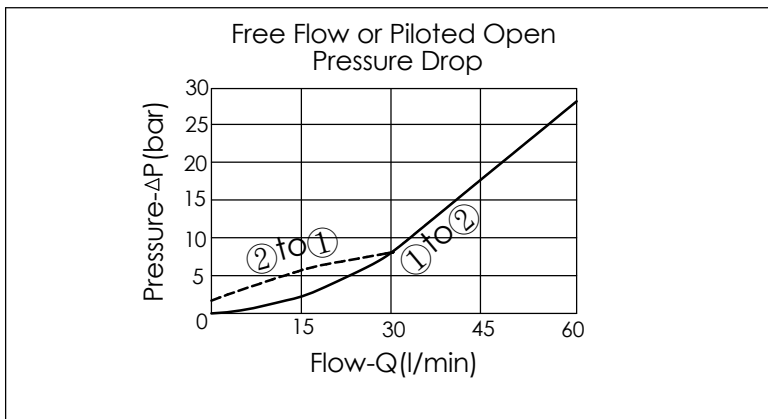


Ordering Code: **CB-11A-X-Y-Z**

UNIT:mm



TECHNICAL DATA		
Max. Setting:	350	bar
Rated flow:	60	l/min
Cavity-Tooling:	11A-3	
Installation torque:	40 - 50	Nm
Weight:	0.16 (Z=L,LP)	kg
Pressure Setting: Setting should be 1.3 times maximum load induced pressure. (We suggest when the Max. setting pressure is 350 bar, the load pressure has to be lower than 270 bar.)		



X	PILOT RATIO	
30	10 : 1	
33	3 : 1 (Only Y=J and Y=C)	
34	4.5 : 1	
3B	2.3 : 1 (with sealed pilot)	
3D	4.5 : 1 (with sealed pilot)	
3J	10 : 1 (with sealed pilot)	
3P	16 : 1 (with sealed pilot)	

Y	SPRINGS	
	ADJUSTMENT RANGES(1.7 bar Cracking Pressure)	
J	140 - 350 bar	(210 bar Standard Setting)
K	70 - 175 bar	(140 bar Standard Setting)
	SPECIAL PURPOSES(0.3 bar Cracking Pressure)	
C	140 - 350 bar	(210 bar Standard Setting)
D	70 - 175 bar	(140 bar Standard Setting)

Z	OPTIONS	
L	Leakproof hex. socket screw.	
LP	Leakproof hex. socket screw. With stainless steel external metal components	
CA	Plastic Tamper Resistant Cover	