

COUNTERBALANCE VALVE (Restrictive 280 Bar Maximum Setting)

Ordering Code: **CB-11A-X-Y-Z-20**

Turn screw clockwise to reduce setting and release load.

Control Option: Maximum extension from locating shoulder. (L Control shown)

22.2 Hex. (7/8" inch)

50

Pilot ③

M20x1.5

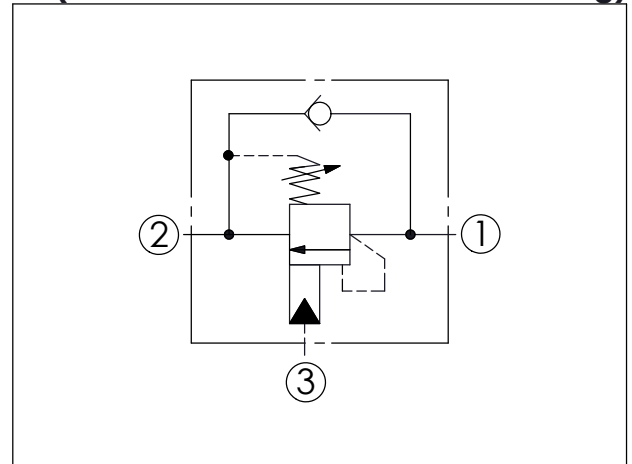
Valve ②

Load ①

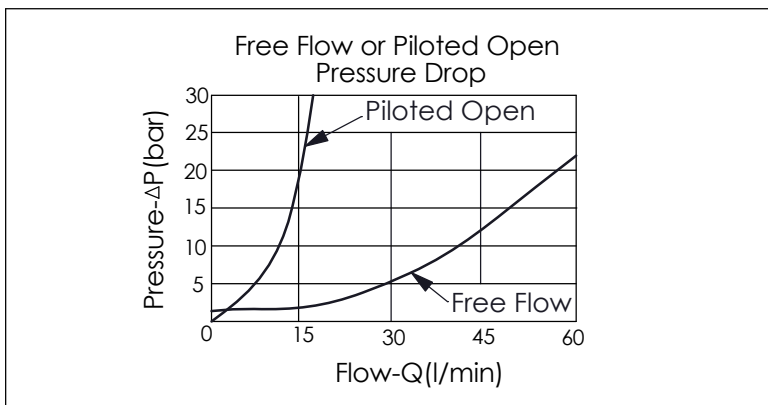
35.1

Locating Shoulder

UNIT:mm



TECHNICAL DATA		
Max. Setting:	280	bar
Rated flow:	20 l/min From Port ① to ②	
	60 l/min From Port ② to ①	
Cavity-Tooling:	11A-3	
Installation torque:	40-50	Nm
Weight:	0.16	kg
Pressure Setting:	Setting should be 1.3 times maximum load induced pressure.	



X	PILOT RATIO	
3C	3	: 1 (with sealed pilot)

Y	SPRINGS	
ADJUSTMENT RANGES (2 bar Cracking Pressure)		
H	70 to 280 bar	(210 bar Standard Setting)
I	25 to 105 bar	(70 bar Standard Setting)
SPECIAL PURPOSES (0.3 bar Cracking Pressure)		
A	70 to 280 bar	(210 bar Standard Setting)
B	25 to 105 bar	(70 bar Standard Setting)
E	16 to 55 bar	(25 bar Standard Setting)

Z	OPTIONS	
L	Leakproof hex. socket screw.	
C	Stainless Steel Tamper Resistant Cover.	