

### TECHNICAL DATA

Aluminum Body Pressure Rating: **210 bar**

Ductile Iron  
Body Pressure Rating: 350 bar

Cavity:  
Refer to 11A3

\* Refer to Winner Cartridge Valves Catalog.

Ductile Iron	2.11 kg(WITHOUT VALVES)

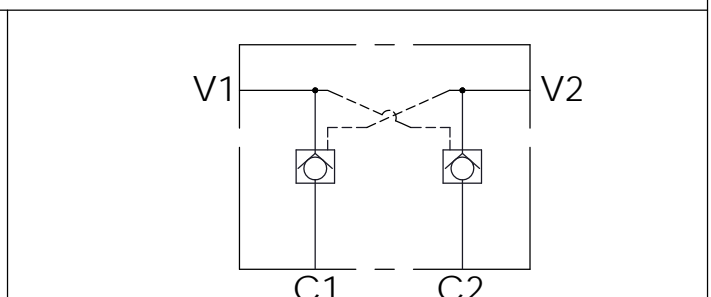
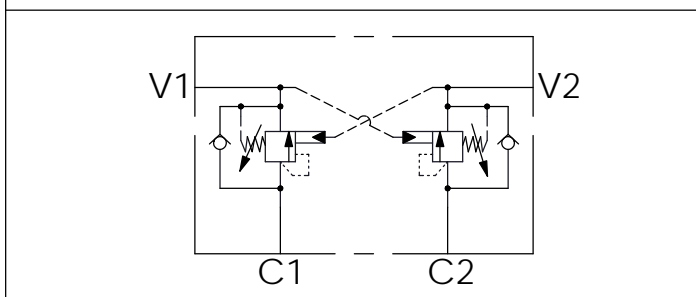
\* If you need the special specification.  
Please contact us.

Z	PORT SIZE		
	PORTS V1,V2	PORTS C1,C2	
G02	G 1/4"	G 1/4"	
<b>G03</b>	G 3/8"	G 3/8"	
G04	G 1/2"	G 1/2"	
A02	1/4"NPT	1/4"NPT	
A03	3/8"NPT	3/8"NPT	
S06	SAE 6	SAE 6	
S08	SAE 8	SAE 8	

X	SELECTION FOR V1 PORT CONTROL	
<b>11A3</b>	CAVITY ONLY(WITHOUT VALVE)	
<b>CB3H</b>	CB11A33HL (3:1 , 280bar)	
<b>CO20</b>	CO11A3020N (2.0bar)	

Y	SELECTION FOR V2 PORT CONTROL	
<b>11A3</b>	CAVITY ONLY(WITHOUT VALVE)	
<b>CB3H</b>	CB11A33HL (3:1 , 280bar)	
<b>CO20</b>	CO11A3020N (2.0bar)	

### HYDRAULIC CIRCUITS(WITH VALVES)



Ordering Code: **ML-60-CDW-CB3H-CB3H-S01**

Ordering Code: **ML-60-CDW-CO20-CO20-S01**