

(Free flow side to nose check valve)

Ordering Code: **CV-5A-X-Y-Z**

28.5 Hex. (1 1/8 inch)

1.00-14UNS-2A

Maximum Extension from Locating Shoulder.

17.5

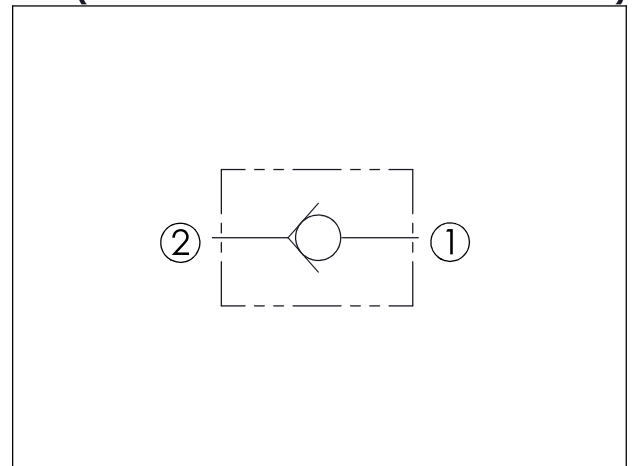
Locating Shoulder

41.1

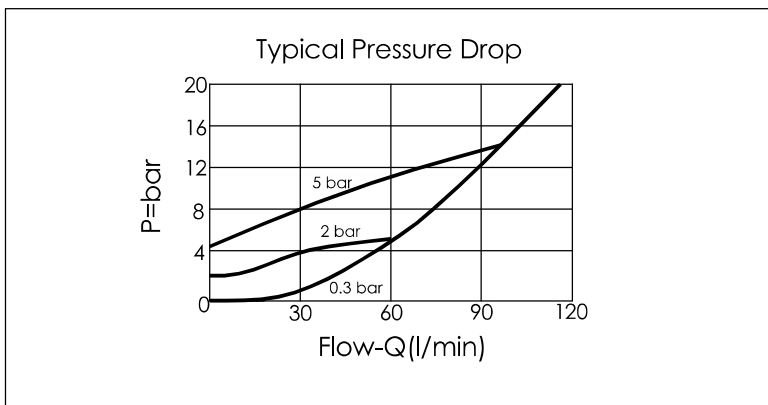
In (2)

Out (1)

UNIT:mm



TECHNICAL DATA		
Max. pressure:	350	bar
Rated flow:	120	l/min
Cavity-Tooling:	5A-2	
Installation torque:	60-70	Nm
Weight:	0.20	kg



X	OPERATION	
21	2 to 1 (Free Flow)	

Y	SPRINGS	
	Cracking pressure	
015	0.15 bar	
03	0.3 bar	
10	1.0 bar	
20	2.0 bar	
35	3.5 bar	
50	5.0 bar	
70	7.0 bar	

Z	OPTION	
N	Non-adjustable	