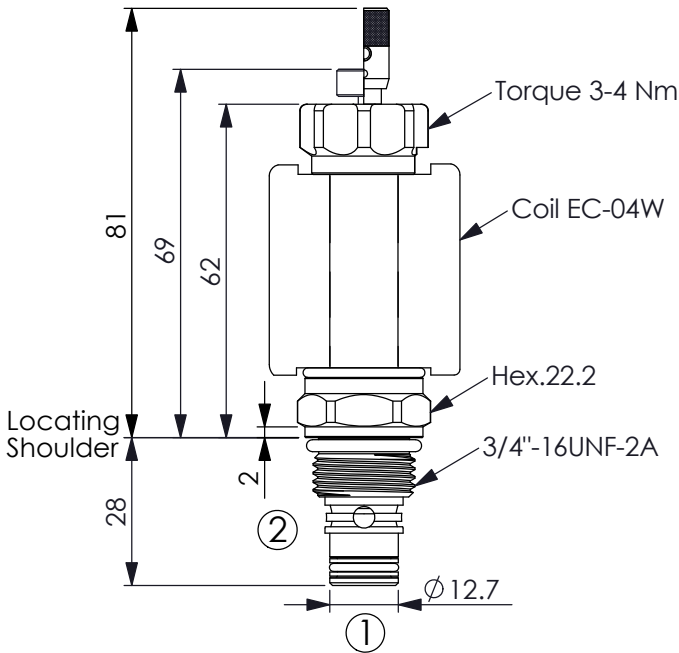


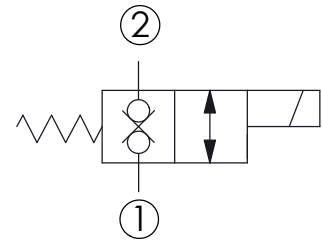
SOLENOID OPERATED VALVE

(Direct-Acting Normally-Closed Double-Lock Cartridge Style)

Ordering Code: **EP-08W-X-Y-Z-04**



UNIT:mm



TECHNICAL DATA

Max.Operating pressure: 350 bar
(Refer To Performance Chart)

Rated flow: 15 l/min
(Refer To Performance Chart)

Cavity-Tooling: 08W-2

Installation torque: 39-51 Nm

Weight: 0.11 (Z:P) kg

Fluids-Temperatures: -40 to 120 °C

Internal Leakage: 0.15cc/minute
(3 drops/minute) max.at 210 bar

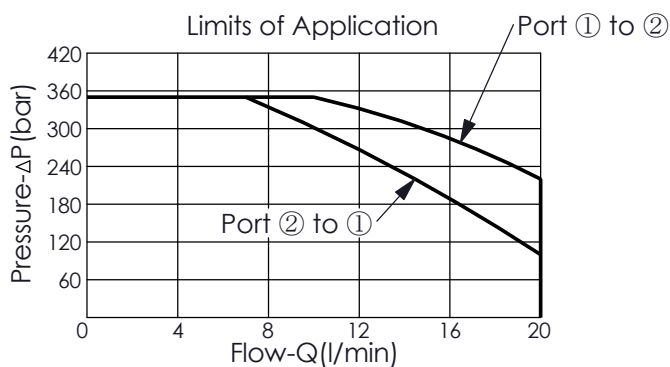
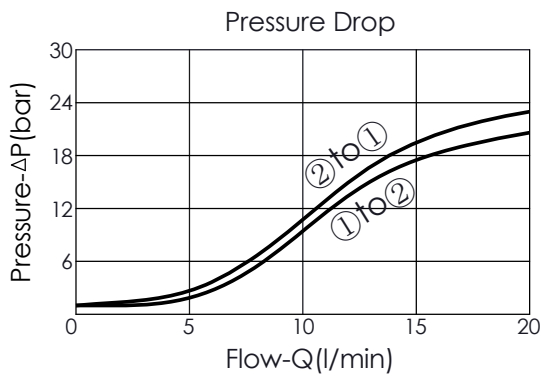
Filtration: 25 µm nominal or better

Minimum Voltage Required:
90 % of nominal

Coils must be ordered separately

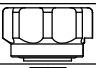


Mounting Position: unrestricted

Performance Chart



Y	OPERATION
51	Direct-Acting Normally-Closed Double-Lock

X	STRUCTURE
2A	2 Ports - 20 Watt. Coil Ø 12.7 mm tube

Z	OPTIONS
N	Non-adjustable 
P	Push Style Manual Override 
PC	Push Style Manual Override with Higher Knob 
T	Push and Twist Style Manual Override 