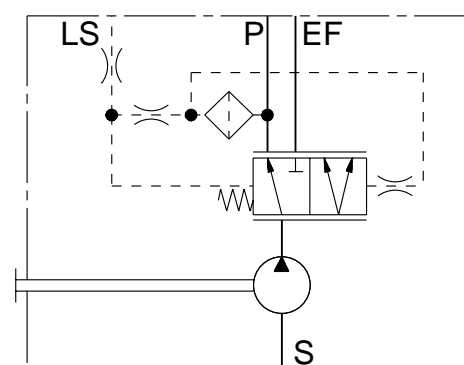
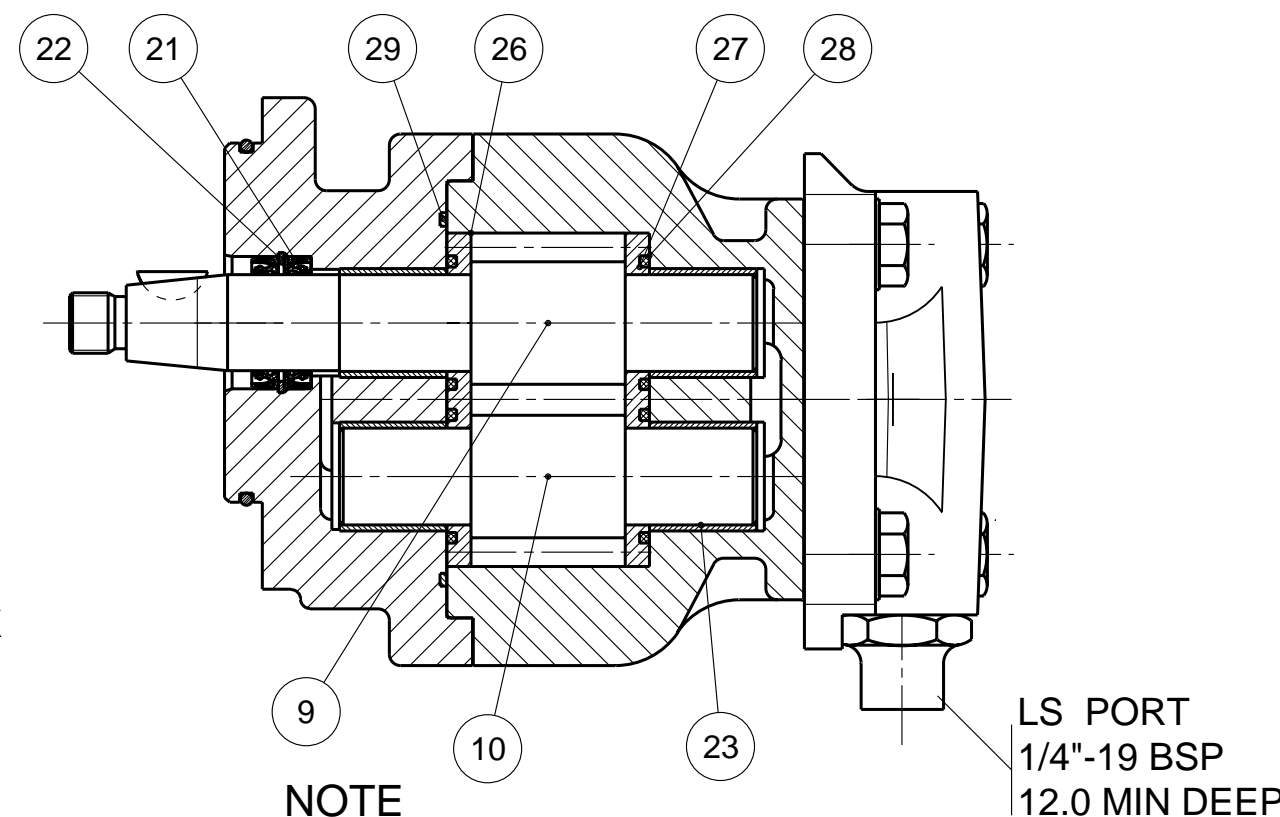


PUMP DATA	
DISPLACEMENT	37,0 ccm
MAX. PRESSURE	SEE VALVE DATA
SPEED RATE	500 TO 3000 min ⁻¹
MAX. INPUT SHAFT TORQUE	301 Nm
ROTATION	CLOCKWISE



PUMP WITH LOAD SENSING PRIORITY VALVE AND DYNAMIC LOAD SENSING SIGNAL
 MAX. PRESSURE AT PRIORITY PORT (P) 180 bar
 MAX. PRESSURE AT EXCESS PORT (EF) 260 bar
 CONTROL PRESSURE 7 bar

38.1MM SPLIT FLANGE METRIC
 M12X1.75 - 6H THD
 18.0 DEEP - 4 REQ'D



LS PORT
 1/4"-19 BSP
 12.0 MIN DEEP

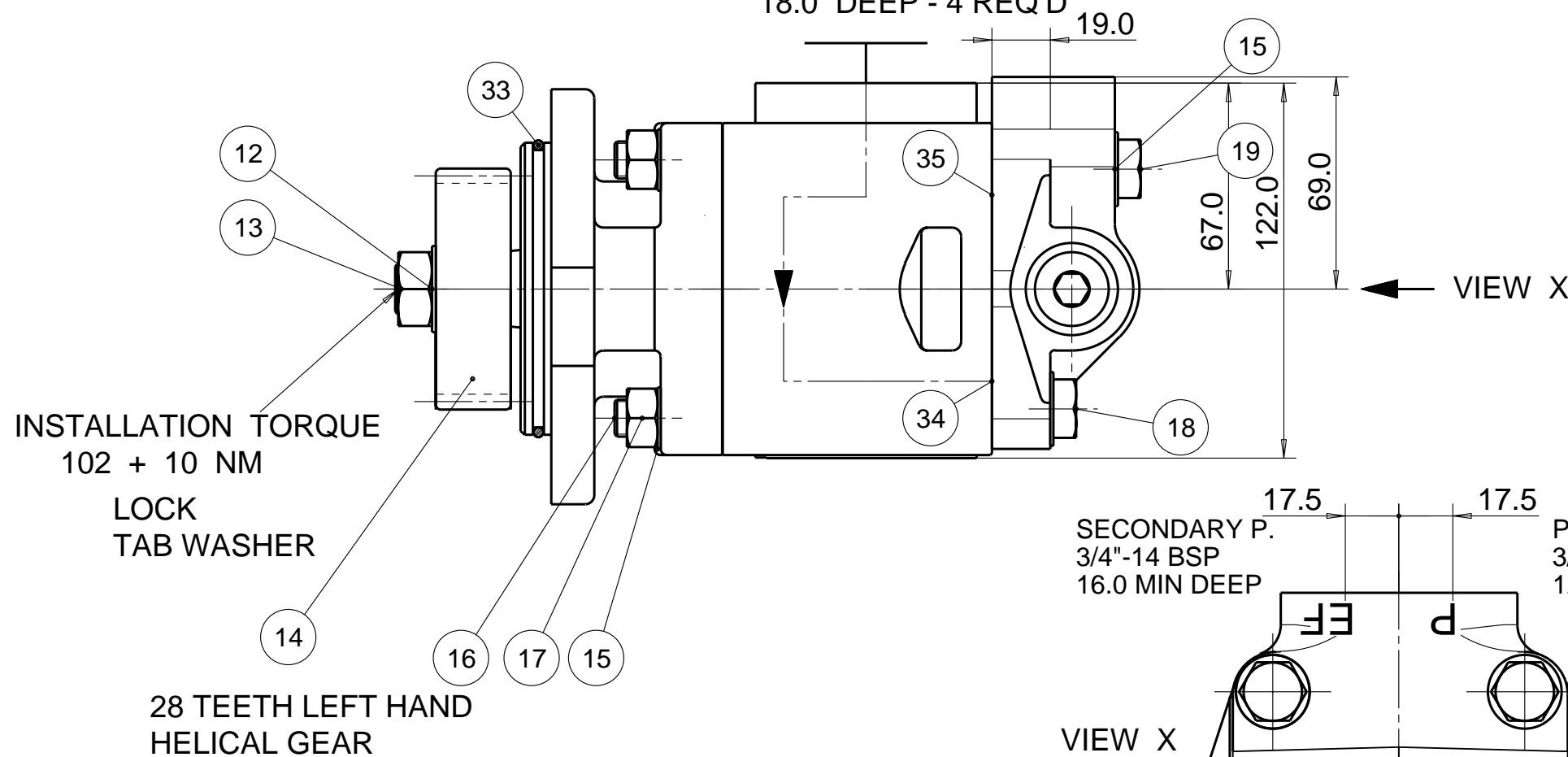
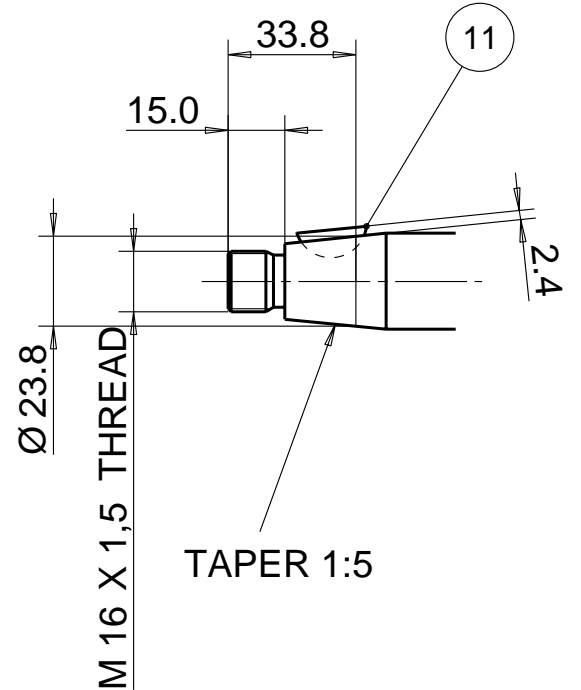
NOTE

1 FOR ASSEMBLY INSTRUCTIONS SEE DWG. NO. "620-B1" "PGP620 PUMP ASSEMBLY INSTRUCTIONS".

ITEM	PART NO	REQD	ITEM	PART NO	REQD
28	8682-015-00Q	2	SEAL. ELEM.	36	
27	8682-016-00L	2	SEAL. ENERG	35	9313-022-00A 1 O-RING
26	391 2185 150	2	BAL. PLATE	34	9313-024-00W 1 O-RING
25				33	9321-743-00J 1 O-RING
24				32	391 1432 004 2 SCREW. DR.
23	391 0482 237	4	BUSH	31	391 2183 227 1 NAMEPLATE
22	9211-530-006	1	CIRCLIP	30	
21	8682-019-00Z	2	SEAL. LIP	29	9312-641-004 1 SEAL. SECT.

ITEM	PART NO	REQ'D	DESCRIPTION
20			
19	9112-405-009	2	CAPSCREW (55 MM)
18	9111-413-00K	2	CAPSCREW (35 MM)
17	391 1451 149	4	M12 NUT
16	8682-007-00M	4	M12 SCREW
15	9222-575-009	8	WASHER
14	8682-006-00R	1	HELICAL GEAR
13	9116-004-009	1	NUT
12	8682-010-00F	1	WASHER
11	391 1781 095	1	KEY
10	702 2737 000	1	DRIVEN GEAR
9	702 1837 802	1	DRIVE GEAR
8			
7			
6			
5			
4			
3	2PRB037-28M5B1Y	1	BODY
2	350 9711 023	1	CVP 100
1	2PRF03P1V	1	FLANGE

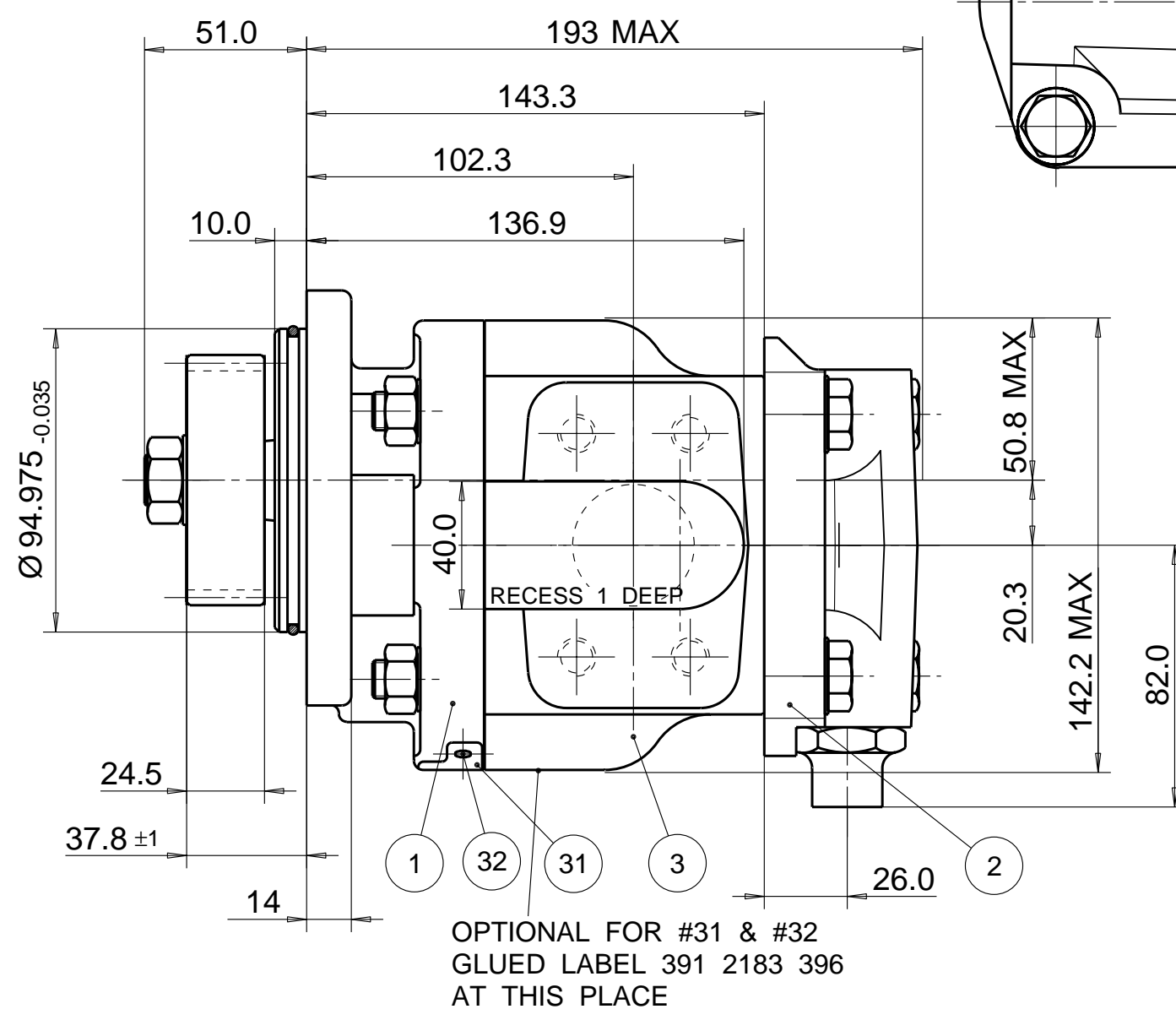
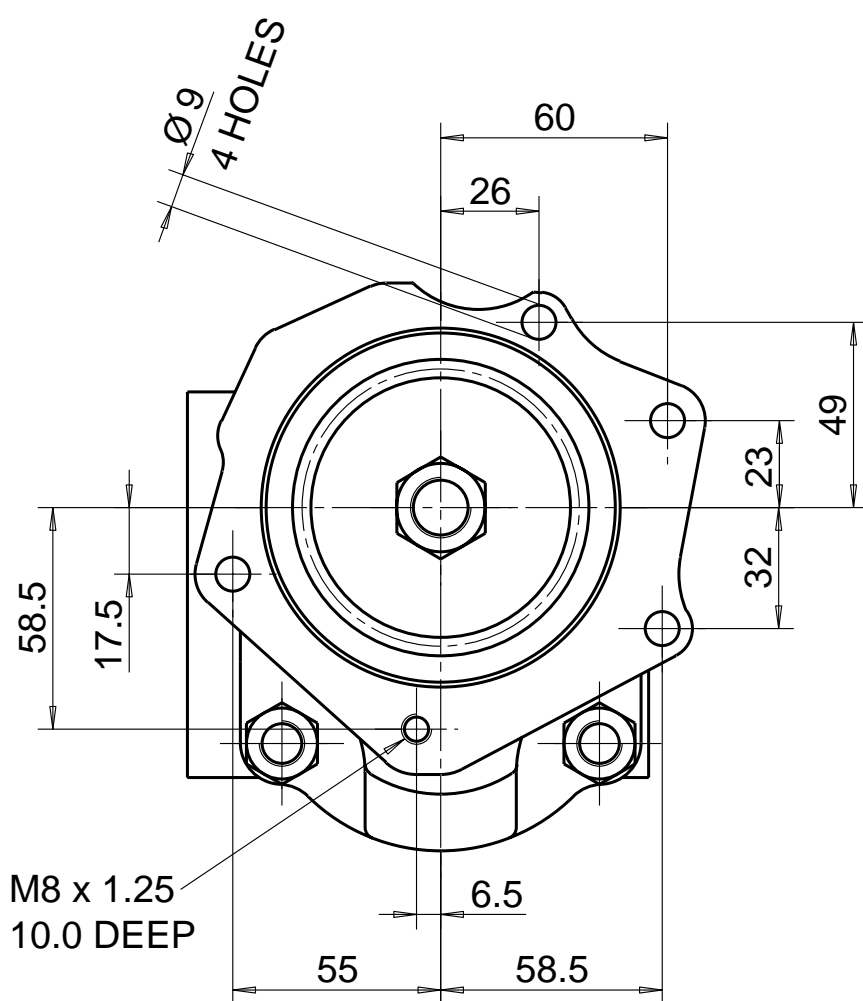
WOODRUFF KEY
 5,0 X 7,5 DIN 6888



SECONDARY P.
 3/4"-14 BSP
 16.0 MIN DEEP

PRIORITY P.
 3/8"-19 BSP
 12.0 MIN DEEP

VIEW X



OPTIONAL FOR #31 & #32
 GLUED LABEL 391 2183 396
 AT THIS PLACE

WITH EXCEPTION OF DRIVE SHAFT, FLANGE SPIGOT AND MTG. FACE PLUS AREAS AROUND PORTS, ALL SURFACES ARE PAINTED BLACK ZSS - A1 (AA-O-05.2)

D2	#POS.23 REPLACED 391 0482 237 WAS 8682-018-00C
D1	#POS.26 REPLACED 391 2185 150 WAS 8682-058-00M

SYM.	REVISIONS	13NOV15 AS 15-11-615
------	-----------	----------------------

22JUL10 WS 10-07-640

THIRD ANGLE PROJECTION

EXP NO.	
FIRST USED	06 - 02 - 613
6783U	

THIS DOCUMENT CONTAINS INFORMATION THAT IS CONFIDENTIAL AND PROPRIETARY TO PARKER-HANNIFIN CORPORATION ("PARKER"). THIS DOCUMENT IS FURNISHED ON THE UNDERSTANDING THAT THE DOCUMENT AND THE INFORMATION IT CONTAINS WILL NOT BE COPIED OR DISCLOSED TO OTHERS OR USED FOR ANY PURPOSE OTHER THAN CONDUCTING BUSINESS WITH PARKER, AND WILL BE RETURNED AND ALL FURTHER USE DISCONTINUED UPON REQUEST BY PARKER. ALL RIGHTS RESERVED.

PGP620A0370CT2T5MT5B1LZAU

MATERIAL	ADM CTR P	DR.BY DATE	CH.BY DATE	SCALE
H.E.-STD:	REV DTE 13NOV15	WS 08FEB06	JS 08FEB06	1/2
	WT 15.9 kg	DIMENSIONS ARE MM		

Parker Pump & Motor Division
 Chemnitz

6783U

© 2015 Parker Hannifin Corporation