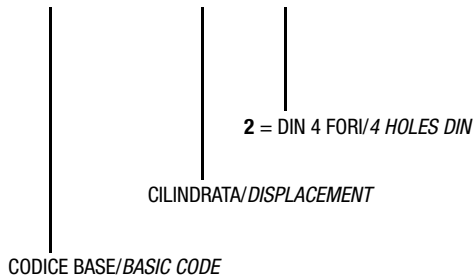


SERIE P1-4D 3.1.6.6.

CODICE DI ORDINAZIONE - DECODING

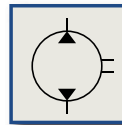
3.1.6.6 . XXX . 2 . 0 . 00



DIN
5 4 6 2
SE

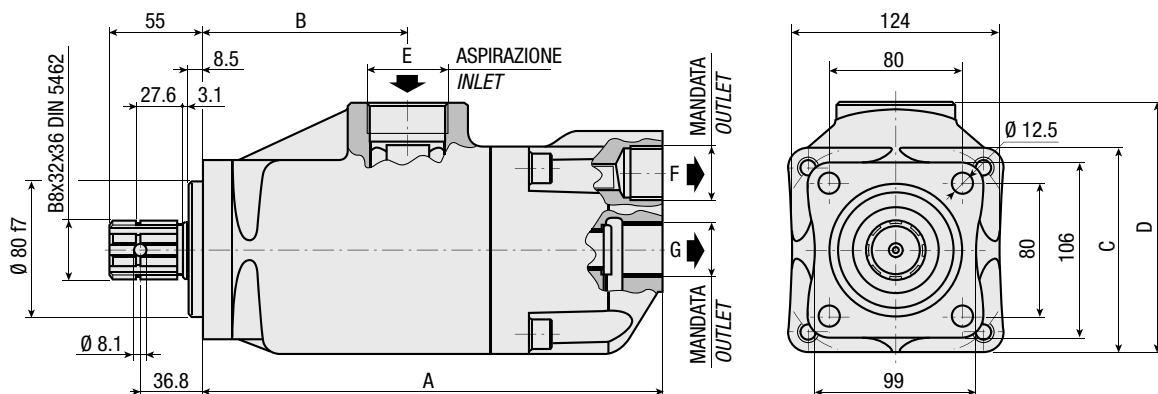
P1 41+41-4D
P1 51+41-4D
P1 51+51-4D

Pompa a Pistoni Doppia Portata Dual Flow Piston Pump



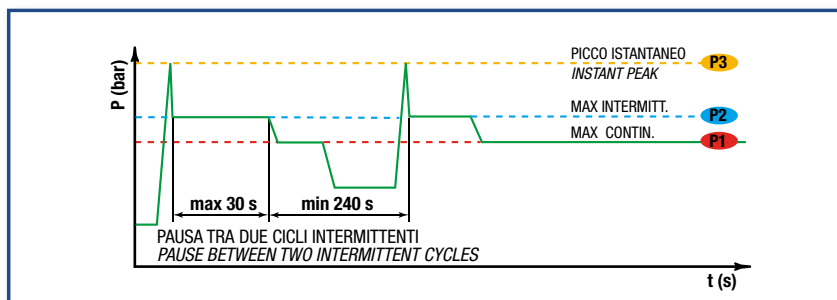
CARATTERISTICHE E DATI TECNICI - SPECIFICATIONS AND TECHNICAL DATA

TIPO TYPE	CODICE CODE	CILINDRATA DISPLACEMENT cm ³ /rev. G+F	A mm	B mm	C mm	D mm	E ASPIRAZIONE INLET	F MANDATA OUTLET	G MANDATA OUTLET	PESO WEIGHT kg
P1 41+41-4D	3.1.6.6.082.2.0.00	41+41	276	122.5	124	150.5	1" 1/2 G	1" G	1" G	17.7
P1 51+41-4D	3.1.6.6.092.2.0.00	51+41								17.7
P1 51+51-4D	3.1.6.6.102.2.0.00	51+51								17.7



DATI TECNICI - TECHNICAL DATA

ESEMPIO CICLI LAVORO - EXAMPLE OF WORKING CYCLES



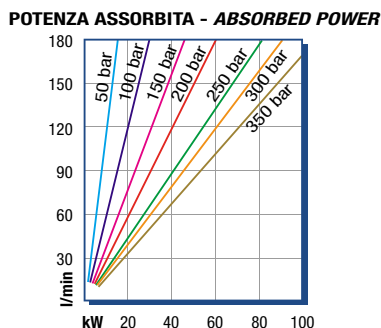
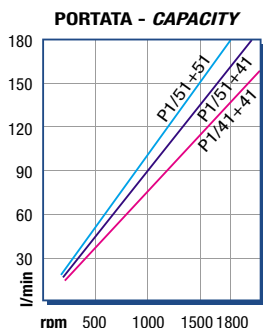
Pressione d'aspirazione: Inlet pressure:	0.7 ÷ 1.5 bar (assoluti/absolute)
Campo viscosità lavoro: Operating viscosity range:	12 ÷ 100 cSt
Temperatura fluido °C (t): Fluid temperature °C (t):	-10° + 80° C

Pressione Lavoro Working Press. P2	Contaminazione - Contamination		Filtro - Filter βx = 75
	NAS 1638	ISO 4406	
≤ 200 bar	12	21/18	40 μm
≥ 200 bar	11	20/17	25 μm

◀ FILTRAZIONE CONSIGLIATA (ritorno o mandata)
 RECOMMENDED FILTERING (return or outlet)

TIPO - TYPE			P1 41+41-4D	P1 51+41-4D	P1 51+51-4D
Cilindrata Displacement	Vg	cm ³ /n cm ³ /rev.	41+41	51+41	51+51
Pressione massima continua Max continuous operating pressure	P1	bar	300	300	300
Pressione massima intermittente Max intermitt. operating pressure (max 30 s)	P2		350	350	350
Pressione massima di picco Max peak pressure (≤ 0.1 s)	P3		400	400	400
Velocità massima intermittente Max intermittent speed (P ≤ 20 bar)	n3	n/min r.p.m.	2000	2000	2000
Velocità massima continua Max continuous speed (≤ P1)	n1		1600	1600	1600
Velocità minima intermittente Min intermittent speed (≤ P2 x 0.5) (max 30 s)	n4		400	400	400

DIAGRAMMI - DIAGRAMS



RILIEVI ESEGUITI CON OLIO
 ISO VG 46 A 50° C (ν=30 cSt)
 THE ABOVE SPECIFICATIONS
 REFER TO OIL TYPE ISO
 VG 46 AT 50° C (ν=30 cSt)