

HINWEISE UND ANGABEN

Betriebsbedingungen siehe Y 510 201 598.

Die Darstellung zeigt eine rechtsdrehende Pumpe (Auf Antriebswelle gesehen). Bei linksdrehender Pumpe andere Lage der Antriebswelle beachten. Die Pumpe darf nur in angegebener Drehrichtung drehen.

Alle Ölschlüsse für Transport und Lagerung staubdicht verschlossen, z.B. mit Kunststoffstopfen.

Kennlinien DBV siehe Ventil-Angebotszeichnung A 532 001 137.

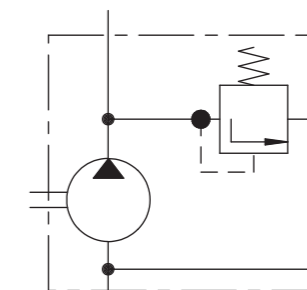
ADDITIONAL INFORMATION

WORKING CONDITIONS SEE Y 510 201 598.

CW ROTATION SHOWN. NOTE DIFFERENT POSITION OF DRIVE SHAFT FOR CCW ROTATION. PUMP MUST BE DRIVEN IN PROPER DIRECTION ONLY.

ALL OIL PORTS CLOSED PROPERLY AGAINST DUST FOR TRANSPORT AND STORAGE, E.G. WITH PLASTIC CLOSURE CAPS.

CHARACTERISTIC CURVES PRV SEE VALVE OFFER DRAWING A 532 001 137.



|   |              |               |
|---|--------------|---------------|
| general tolerances for/Allgemeintoleranzen fuer |              |               |
| lin.dim./L.masse                                | radii/Radien | angles/Winkel |
| ± 0.3   | --           | ± 1°          |
| all linear dimensions in/Alle Laengennisse in   |              | mm            |
| A-document/A-Dokument                           |              |               |
| 2014-01-13T11:06:24                             |              |               |

| Entwurfs-Zeichnungs-Nr. | Bestell-Nr.   | Typ-Aufschrift          | Dreh-richtung    | Volumen [cm <sup>3</sup> /U] | max. Drehzahl [U/min] | Nennndruck DBV [bar]  | A         | B     | C     | Bemerkungen |
|-------------------------|---------------|-------------------------|------------------|------------------------------|-----------------------|-----------------------|-----------|-------|-------|-------------|
| DRAWING                 | PART NUMBER   | DESIGNATION             | DIR. OF ROTATION | DISPLACEMENT                 | MAX. SPEED            | PRESSURE RELIEF VALVE | DIMENSION |       |       | REMARKS     |
| B 510 230 754           | .             | AZPF-10-022RCP20MD025xx | rechts/CW        | 22.5                         | 2500                  | 25                    | 52.6      | 104.1 | 123.1 | .           |
| B 510 230 761           | 0 510 715 013 | AZPF-10-022RCP20MD008xx | rechts/CW        | 22.5                         | 2500                  | 8                     | 52.6      | 104.1 | 123.1 | .           |
| B 510 230 753           | .             | AZPF-10-019RCP20MD025xx | rechts/CW        | 19                           | 3000                  | 25                    | 45        | 98.7  | 117.7 | .           |
| B 510 230 760           | 0 510 615 031 | AZPF-10-019RCP20MD008xx | rechts/CW        | 19                           | 3000                  | 8                     | 45        | 98.7  | 117.7 | .           |
| B 510 230 787           | .             | AZPF-12-016RCP20MD210xx | rechts/CW        | 16                           | 3000                  | 210                   | 45        | 93.7  | 112.7 | .           |
| B 510 230 780           | .             | AZPF-12-016RCP20MD100xx | rechts/CW        | 16                           | 2600                  | 100                   | 45        | 93.7  | 112.7 | .           |
| B 510 230 759           | 0 510 615 030 | AZPF-10-016RCP20MD008xx | rechts/CW        | 16                           | 3000                  | 8                     | 45        | 93.7  | 112.7 | .           |
| B 510 230 778           | .             | AZPF-12-014RCP20MD100xx | rechts/CW        | 14                           | 3000                  | 100                   | 45        | 90.3  | 109.3 | .           |
| B 510 230 768           | .             | AZPF-10-014RCP20MD008xx | rechts/CW        | 14                           | 3000                  | 8                     | 45        | 90.3  | 109.3 | .           |
| B 510 230 724           | 0 510 515 319 | AZPF-10-011LCP20MD150xx | links/CCW        | 11                           | 3500                  | 150                   | 45        | 85.3  | 104.3 | .           |
| B 510 230 783           | .             | AZPF-12-011RCP20MD100xx | rechts/CW        | 11                           | 3500                  | 100                   | 45        | 85.3  | 104.3 | .           |
| B 510 230 758           | 0 510 515 020 | AZPF-10-011RCP20MD008xx | rechts/CW        | 11                           | 3500                  | 8                     | 45        | 85.3  | 104.3 | .           |
| B 510 230 765           | 0 510 415 334 | AZPF-10-008LCP20MD015xx | links/CCW        | 8                            | 4000                  | 15                    | 40.7      | 80.3  | 99.3  | .           |
| B 510 230 736           | 0 510 415 324 | AZPF-10-008LCP20MD200xx | links/CCW        | 8                            | 4000                  | 200                   | 40.7      | 80.3  | 99.3  | .           |
| B 510 230 757           | 0 510 415 072 | AZPF-10-008RCP20MD008xx | rechts/CW        | 8                            | 4000                  | 8                     | 40.7      | 80.3  | 99.3  | .           |
| B 510 230 728           | .             | AZPF-10-005LCP20MD120xx | links/CCW        | 5.5                          | 4000                  | 120                   | 38.6      | 76.2  | 95.2  | .           |
| B 510 230 766           | 0 510 315 008 | AZPF-10-005RCP20MD008xx | rechts/CW        | 5.5                          | 4000                  | 8                     | 38.6      | 76.2  | 95.2  | .           |
| B 510 230 756           | 0 510 215 011 | AZPF-10-004RCP20MD008xx | rechts/CW        | 4                            | 4000                  | 8                     | 37.4      | 73.7  | 92.7  | .           |

|                       |          |              |                   |                |      |                           |                       |
|-----------------------|----------|--------------|-------------------|----------------|------|---------------------------|-----------------------|
| AG --                 | 20140113 | bhl2si       | bhl2si            | fiv2si         | 7930 | DC-MA/EPE1                | 51MAEPE0734           |
| AA --                 | 20070508 | LL           | LL                | LL             | 7930 | DC-MA/EPE1                |                       |
| Ind./Change/Aend.     | YYYYMMDD | Drawn/Gez.   | Checked/Prüf.     | Releas./Freig. | BWN  | Resp. dept./Verantw. Abt. | Add. info./Zus. Info. |
| Lang./Spr.            | Syst.    | Wght./Gew.   | HY GEAR PUMP      |                |      |                           | Sheet/Bl.             |
| EN/DE                 | PE       | Scale/M.Stab | HY-ZAHNRADPUMPE   |                |      |                           | 1/1                   |
| DRAWING               |          | 1:2          | AGZ A 510 230 724 |                |      |                           | DP/TD                 |
| PART NUMBER           |          |              | 001               |                |      |                           | Ind.                  |
| DESIGNATION           |          |              | AG                |                |      |                           | Format                |
| DIR. OF ROTATION      |          |              | A2                |                |      |                           |                       |
| DISPLACEMENT          |          |              | Repl. by          |                |      |                           |                       |
| MAX. SPEED            |          |              |                   |                |      |                           |                       |
| PRESSURE RELIEF VALVE |          |              |                   |                |      |                           |                       |
| DIMENSION             |          |              |                   |                |      |                           |                       |
| REMARKS               |          |              |                   |                |      |                           |                       |

© Alle Rechte bei Bosch Rexroth AG. auch für den Fall von Schutzrechtsanmeldungen. Jede Verfügungsbefugnis, wie Kopier- und Weitergaberecht, bei uns.

This document, as well as the data, specifications and other information set forth in it, are the exclusive property of Bosch Rexroth AG. It may not be reproduced or given to third parties without its consent.

R450938279 / 4510230724 / AG-1 / MODEL NAME / DRAFT / AG-1