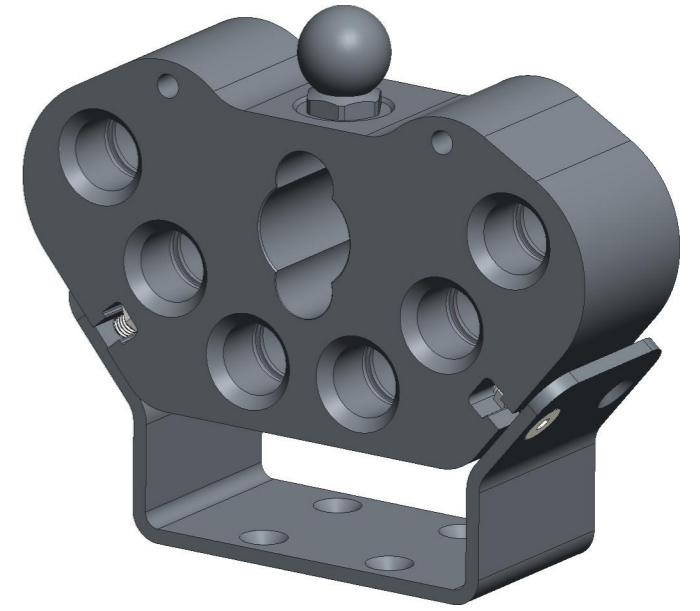
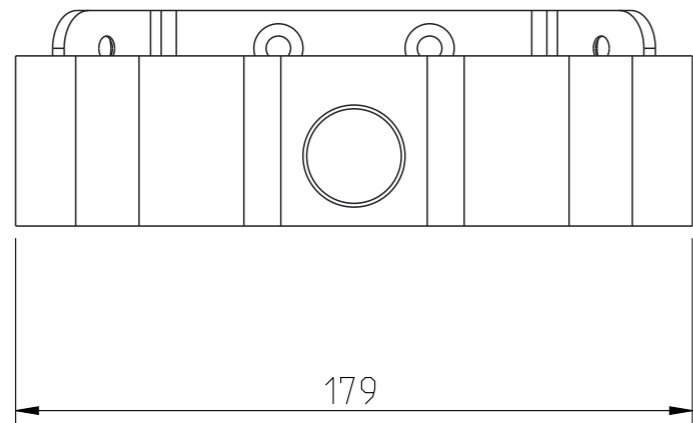
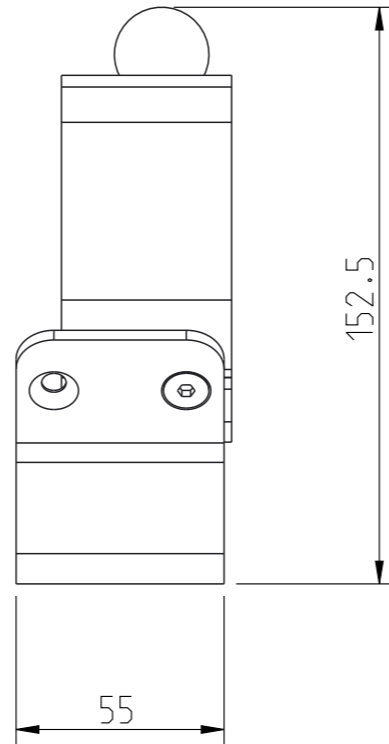
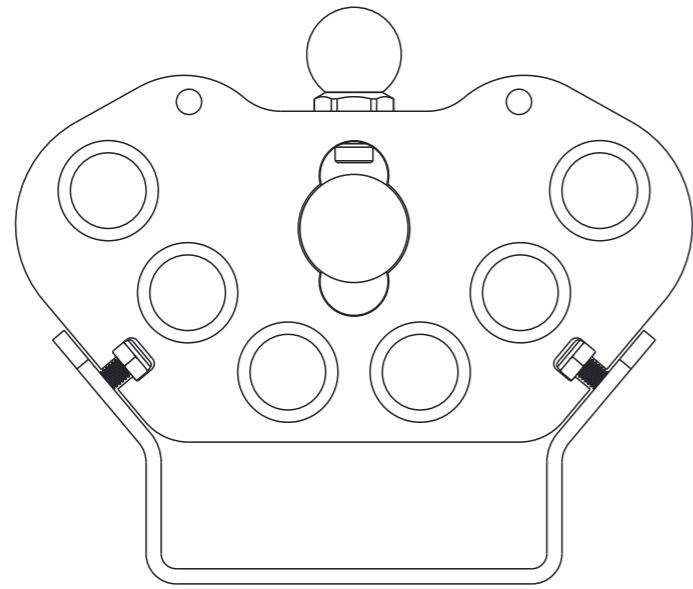


Alle rätigheter förbehålls.
All rights reserved.
Alle Rechte vorbehalten.

Diese Zeichnung darf weder ganz noch teilweise ohne unsere ausdrückliche Genehmigung kopiert oder auf andere Weise vervielfältigt werden. Werden. Zuwiderhandlungen werden gerichtlich verfolgt.

Denna handling får ej utan vårt medgivande delges annan, kopieras eller eljest obehörigen användas. Övertidelse härvid beivras med stöd av gällande lag. This document must not be copied, either completely or in part, without permission. Any infringement will have legal consequences.



Product no: 10_932_1076

Max working pressure: bar connected
bar disconnected
Min burst pressure: bar connected
bar disconnected

Sealing material:
Temperatur range: °C - °C

Nominal flow diameter, DN: mm

Connection

Connection stroke: mm

9	1	Spring	Stainless steel
8	2	Screw	Steel / FZB
7	1	Screw	Steel / FZB
6	6	O-ring	NBR
5	2	Lock nut M6	Steel / FZB
4	1	Handle ball	Plastic
3	1	Guide	Steel Zn8 silver
2	1	Fixation plate	Steel
1	1	Block profile	Materialnamn i smst?
Detalj Item	Antal Quant.	Benämning Description	Material Material

CEJN	Skala Scale	1:2	Ritad Drawn	C ABJOER	Kontr. Checked	-	Godk. Appr.	-	Äm nr. ALT. no.	-	Dat. Date	141209
	Assembly drawing		Ritning nr./Drawing No.				50_932_1076		Utg./Issue		AA	